

RPG781Hu01 100µg

Recombinant NK6 Homeobox Protein 1 (NKX6-1)

Organism Species: *Homo sapiens (Human)*

Instruction manual

FOR RESEARCH USE ONLY

NOT FOR USE IN CLINICAL DIAGNOSTIC PROCEDURES

13th Edition (Revised in Aug, 2023)

[PROPERTIES]

Source: Prokaryotic expression

Host: *E.coli*

Residues: Met1~Ser367

Tags: N-terminal His and GST Tag

Subcellular Location: Nucleus

Purity: > 97%

Traits: Freeze-dried powder

Buffer formulation: PBS, pH7.4, containing 0.01% SKL, 5% Trehalose.

Original Concentration: 200µg/mL

Applications: Positive Control; Immunogen; SDS-PAGE; WB.

(May be suitable for use in other assays to be determined by the end user.)

Predicted isoelectric point: 9.5

Predicted Molecular Mass: 67.8kDa

Accurate Molecular Mass: 68kDa as determined by SDS-PAGE reducing conditions.

[USAGE]

Reconstitute in 10mM PBS (pH7.4) to a concentration of 0.1-1.0 mg/mL. Do not vortex.

[STORAGE AND STABILITY]

Storage: Avoid repeated freeze/thaw cycles.

Store at 2-8°C for one month.

Aliquot and store at -80°C for 12 months.

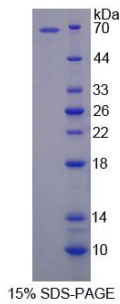
Stability Test: The thermal stability is described by the loss rate. The loss rate was determined by accelerated thermal degradation test, that is, incubate the protein at 37°C for 48h, and no obvious degradation and precipitation were observed. The loss rate is less than 5% within the expiration date under appropriate storage condition.

[SEQUENCE]

```

MLAVGAMEGT RQSAFLLSSP PLAALHSMAE MKTPLYPAAY PPLPAGPPSS
SSSSSSSSSP SPPLGTHNPG GLKPPATGGL SSLGSPQQL SAATPHGIND
ILSRPSMPVA SGAALPSASP SGSSSSSSSS ASASSASAAA AAAAAAAAAAA
SSPAGLLAGL PRFSSLSPPP PPPGLYFSPS AAAVAAVGRY PKPLAELPGR
TPIFWPGVMQ SPPWRDARLA CTPHQGSILL DKDGKRKHTR PTFSGQQIFA
LEKTFEQTKY LAGPERARLA YSLGMTESQV KWWFQNRRTK WRKKHAAEMA
TAKKKQDSET ERLKGASENE EEDDDYNKPL DPNSDDEKIT QLLKKHKSSS
GGGGGLLHA SEPESSS
  
```

[IDENTIFICATION]



[IMPORTANT NOTE]

The kit is designed for research use only, we will not be responsible for any issue if the kit was used in clinical diagnostic or any other procedures.