

RPC665Hu01 1mg

Recombinant Natriuretic Peptide Receptor 1 (NPR1)

Organism Species: *Homo sapiens (Human)*

Instruction manual

FOR RESEARCH USE ONLY

NOT FOR USE IN CLINICAL DIAGNOSTIC PROCEDURES

12th Edition (Revised in Aug, 2016)

[PROPERTIES]

Source: Prokaryotic expression

Host: *E.coli*

Residues: Gly33~Glu473

Tags: His and TrxA Tag

Subcellular Location: Membrane

Purity: > 97%

Traits: Freeze-dried powder

Buffer formulation: 20mM Tris, 150mM NaCl, pH8.0, containing 0.01% SKL, 5% Trehalose.

Original Concentration: 80µg/mL

Applications: Positive Control; Immunogen; SDS-PAGE; WB.

(May be suitable for use in other assays to be determined by the end user.)

Predicted isoelectric point: 5.2

Predicted Molecular Mass: 69.3kDa

Accurate Molecular Mass: 70kDa as determined by SDS-PAGE reducing conditions.

[USAGE]

Reconstitute in ddH₂O to a concentration of 0.1-1.0 mg/mL. Do not vortex.

[STORAGE AND STABILITY]

Storage: Avoid repeated freeze/thaw cycles.

Store at 2-8°C for one month.

Aliquot and store at -80°C for 12 months.

Stability Test: The thermal stability is described by the loss rate. The loss rate was determined by accelerated thermal degradation test, that is, incubate the protein at 37°C for 48h, and no obvious degradation and precipitation were observed. The loss rate is less than 5% within the expiration date under appropriate storage condition.

[SEQUENCE]

GNLTVAVV LPLANTSYPW
 SWARVPAVE LALAQVKARP DLLPGWTVRT VLGSSNALG VCSDTAAPLA
 AVDLKWEHNP AVFLGPGCVY AAPVGRFTA HWRVPLLTAG APALGFGVKD
 EYALTTRAGP SYAKLGDFVA ALHRRLGWER QALMLYAYRP GDEEHCFFLV
 EGLFMRVRDR LNITVDHLEF AEDDLSHYTR LLRTMPRKGR VIYICSSPDA
 FRTLMLLALE AGLCGEDYVF FHLDIFGQSL QGGQGPAPRR PWERGDGQDV
 SARQAFQAAK IITYKDPDNP EYLEFLKQLK HLAYEQFNFT MEDGLVNTIP
 ASFHDGLLLY IQAVTETLAH GGTVTDGENI TQRMWNRSFQ GVTGYLKIDS
 SGDRETFSL WMDPENAF RVVLNYNGTS QELVAVSGRK LNWPLGYPPP
 DIPKCGFDNE DPACNQDHL TLE

[IDENTIFICATION]

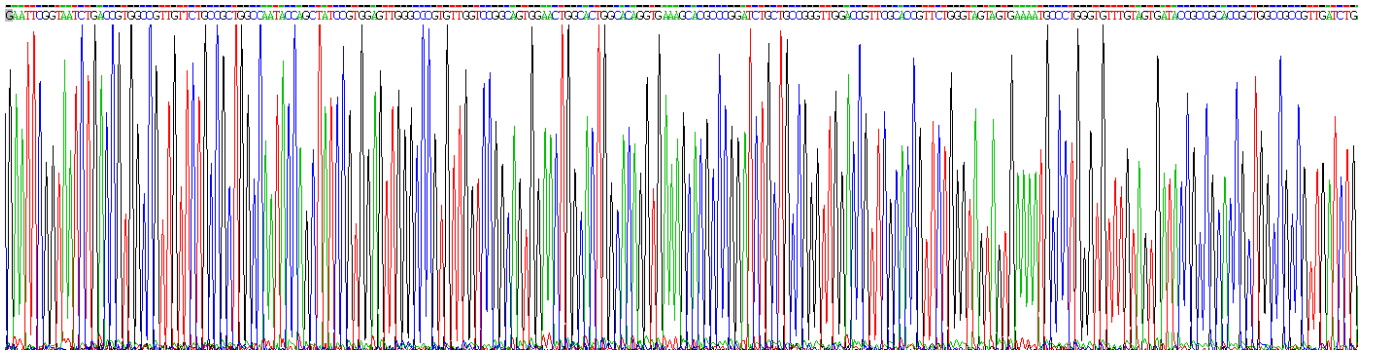


Figure . Gene Sequencing (extract)

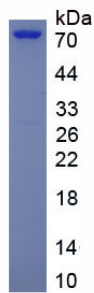


Figure. SDS-PAGE

[IMPORTANT NOTE]

The kit is designed for research use only, we will not be responsible for any issue if the kit was used in clinical diagnostic or any other procedures.