

RPE702Ra01 100µg

Recombinant Netrin G1 (NtnG1)

Organism Species: *Rattus norvegicus* (Rat)

Instruction manual

FOR RESEARCH USE ONLY

NOT FOR USE IN CLINICAL DIAGNOSTIC PROCEDURES

13th Edition (Revised in Aug, 2023)

[PROPERTIES]

Source: Prokaryotic expression

Host: *E.coli*

Residues: Leu25~Phe539

Tags: N-terminal His Tag

Subcellular Location: Membrane

Purity: > 85%

Traits: Freeze-dried powder

Buffer formulation: PBS, pH7.4, containing 0.01% SKL, 5% Trehalose.

Original Concentration: 200µg/mL

Applications: Positive Control; Immunogen; SDS-PAGE; WB.

(May be suitable for use in other assays to be determined by the end user.)

Predicted isoelectric point: 6.1

Predicted Molecular Mass: 61.5kDa

Accurate Molecular Mass: 61kDa as determined by SDS-PAGE reducing conditions.

[USAGE]

Reconstitute in 10mM PBS (pH7.4) to a concentration of 0.1-1.0 mg/mL. Do not vortex.

[STORAGE AND STABILITY]

Storage: Avoid repeated freeze/thaw cycles.

Store at 2-8°C for one month.

Aliquot and store at -80°C for 12 months.

Stability Test: The thermal stability is described by the loss rate. The loss rate was determined by accelerated thermal degradation test, that is, incubate the protein at 37°C for 48h, and no obvious degradation and precipitation were observed. The loss rate is less than 5% within the expiration date under appropriate storage condition.

[SEQUENCE]

LWVGHYDVCKTQIYTEEGKVWDYMACQPESTDMTKYLKVKLDPPDITCGDP
 PESFCAMGNPYMCNNECDASTPELAHPPELMFD FEGRHPSTFWQSATWKEY
 PKPLQVNI T L S W S K T I E L T D N I V I T F E S G R P D Q M I L E K S L D Y G R T W Q P Y Q Y A T
 D C L H A F H M D P K S V K D L S Q H T V L E I I C T E E Y S T G Y S T N S K I I H F E I K D R F A F F A G P
 R L R N M A S L Y G Q L D T T K L R D F F T V T D L R I R L L R P A V G E I F V D E L H L A R Y F Y A I S D I
 K V R G R C K C N L H A T M C V Y D N S K L T C E C E H N T T G P D C G K C K N Y Q G R P W S P G S Y
 L P I P K G T A N T C I P S I S S I G N C E C F G H S N R C S Y I D L L N T V I C V S C K H N T R G Q H C E L C
 R L G Y F R N A S A Q L D D E N V C I E C Y C N P L G S I H D R C N G S G F C E C K T G T T G P K C D E C L
 P G N S W Y Y G C Q P N V C D N E L L H C Q N G G T C H N N V R C V C P D A Y T G I L C E K L R C E E A
 G S C G S D S G Q G A P P R G S P A L L L L T V L L G T A S P L V F

[IDENTIFICATION]

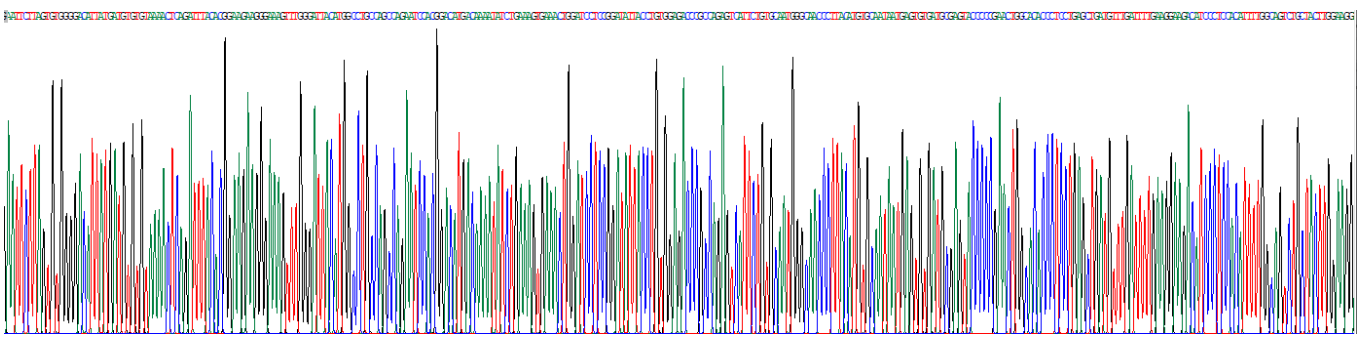


Figure . Gene Sequencing (extract)

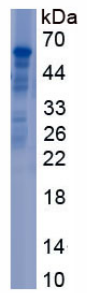


Figure. SDS-PAGE

[IMPORTANT NOTE]

The kit is designed for research use only, we will not be responsible for any issue if the kit was used in clinical diagnostic or any other procedures.