

**RPC677Hu01 50µg**

**Recombinant Neutrophil Cytosolic Factor 1 (NCF1)**

**Organism Species: *Homo sapiens (Human)***

***Instruction manual***

FOR RESEARCH USE ONLY

NOT FOR USE IN CLINICAL DIAGNOSTIC PROCEDURES

---

12th Edition (Revised in Aug, 2016)

**[ PROPERTIES ]**

**Source:** Prokaryotic expression

**Host:** *E.coli*

**Residues:** Met1~Val390

**Tags:** N-terminal His Tag

**Subcellular Location:** Membrane, Cytoplasm

**Purity:** > 95%

**Traits:** Freeze-dried powder

**Buffer formulation:** 20mM Tris, 150mM NaCl, pH8.0, containing 0.01% SKL, 5% Trehalose.

**Original Concentration:** 1600µg/mL

**Applications:** Positive Control; Immunogen; SDS-PAGE; WB.

(May be suitable for use in other assays to be determined by the end user.)

**Predicted isoelectric point:** 9.2

**Predicted Molecular Mass:** 48.4kDa

**Accurate Molecular Mass:** 48kDa as determined by SDS-PAGE reducing conditions.

**[ USAGE ]**

Reconstitute in ddH<sub>2</sub>O to a concentration of 0.1-1.0 mg/mL. Do not vortex.

**[ STORAGE AND STABILITY ]**

**Storage:** Avoid repeated freeze/thaw cycles.

Store at 2-8°C for one month.

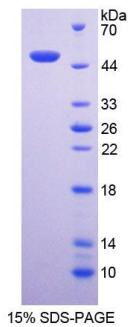
Aliquot and store at -80°C for 12 months.

**Stability Test:** The thermal stability is described by the loss rate. The loss rate was determined by accelerated thermal degradation test, that is, incubate the protein at 37°C for 48h, and no obvious degradation and precipitation were observed. The loss rate is less than 5% within the expiration date under appropriate storage condition.

**[ SEQUENCE ]**

MGDTFIRHIA LLGF EKRFVP SQHYVY MFLV KWQDLSEKVV YRRFTEIYEF  
HKTLKEMFPI EAGAINPENR IIPHLPA PKW FDGQRAAENR QGTLTEYCGT  
LMSLPTKISR CPHLLDFFKV RPDDLKLP TD NQTKKPETYL MPKDGKSTAT  
DITGPIILQT YRAIANYEKT SGSEMALSTG DVVEVVEKSE SGWWFCQMKA  
KRGWIPASFL EPLDSPDETE DPEPNYAGEP YVAIKAYTAV EGDEVSLLEG  
EAVEVIHKLL DGWWVIRKDD VTGYFPSMYL QKSGQDVSQA QRQIKRGAPP  
RRSSIRNAHS IHQRSRKRLS QDAYRRNSVR FLQQR RRQAR PGPQSPGSPL  
EEERQTQRSK PQPAVPPRPS ADLILNRCSE STKRKLASAV

**[ IDENTIFICATION ]**



**[ IMPORTANT NOTE ]**

The kit is designed for research use only, we will not be responsible for any issue if the kit was used in clinical diagnostic or any other procedures.