

**RPC332Hu01 200µg**

**Recombinant Nuclear Mitotic Apparatus Protein 1 (NUMA1)**

**Organism Species: *Homo sapiens (Human)***

***Instruction manual***

FOR RESEARCH USE ONLY

NOT FOR USE IN CLINICAL DIAGNOSTIC PROCEDURES

---

13th Edition (Revised in Aug, 2023)

**[ PROPERTIES ]**

**Source:** Prokaryotic expression

**Host:** *E.coli*

**Residues:** Phe1700~His2115

**Tags:** N-terminal His Tag

**Subcellular Location:** Nucleus, Cytoplasm, Chromosome

**Purity:** > 95%

**Traits:** Freeze-dried powder

**Buffer formulation:** PBS, pH7.4, containing 0.01% SKL, 5% Trehalose .

**Original Concentration:** 350µg/mL

**Applications:** Positive Control; Immunogen; SDS-PAGE; WB.

(May be suitable for use in other assays to be determined by the end user.)

**Predicted isoelectric point:** 10.2

**Predicted Molecular Mass:** 48.7kDa

**Accurate Molecular Mass:** 50/56kDa as determined by SDS-PAGE reducing conditions.

**[ USAGE ]**

Reconstitute in 10mM PBS (pH7.4) to a concentration of 0.1-1.0 mg/mL. Do not vortex.

**[ STORAGE AND STABILITY ]**

**Storage:** Avoid repeated freeze/thaw cycles.

Store at 2-8°C for one month.

Aliquot and store at -80°C for 12 months.

**Stability Test:** The thermal stability is described by the loss rate. The loss rate was determined by accelerated thermal degradation test, that is, incubate the protein at 37°C for 48h, and no obvious degradation and precipitation were observed. The loss rate is less than 5% within the expiration date under appropriate storage condition.

**[ SEQUENCE ]**

QVATDALKSR EPQAKPQLDL SIDSLDLSCE EGTPLSITSK LPRTQPDGTS  
VPGEASPIS QRLPPKVESL ESLYFTPIPA RSQAPLESSL DSLGDVFLDS  
GRKTRSARRR TTQIINITMT KKLDVEEPDS ANSSFYSTRS APASQASLRA  
TSSTQSLARL GSPDYGNSAL LSLPGYRPTT RSSARRSQAG VSSGAPPGRN  
SFYMGTCQDE PEQLDDWNRI AELQQRNRVC PPHLKTCYPL ESRPSLSLGT  
ITDEEMKTGD PQETLRRASM QPIQIAEGTG ITTRQQRKRV SLEPHQGPQT  
PESKKATSCF PRPMTPRDRH EGRKQSTTEA QKKAAPASTK QADRRQSMAF  
SILNTPKPLG NSLLRRGASK KALSKASPNT RSGTRRSPRI ATTTASAATA  
AAIGATPRAK GKAKH

F

[ IDENTIFICATION ]

TTGGATCGGATCTTCAGGTGCACCTGATGCTTAAAGAGGTGGCCGCTAGCCCGCTGGCTGGATGGAGCTGGATCGGATCGGCTGGAGGAGGGGCCCCACTGGATCGCGGAGCTGCTTGGTGGTGGGAGCGGCTGGGAGCGGCTCCACTATCTCCAGGCTGCCCCAGGTGATCCCGGGAGCTGCTACTTACTCCACTC

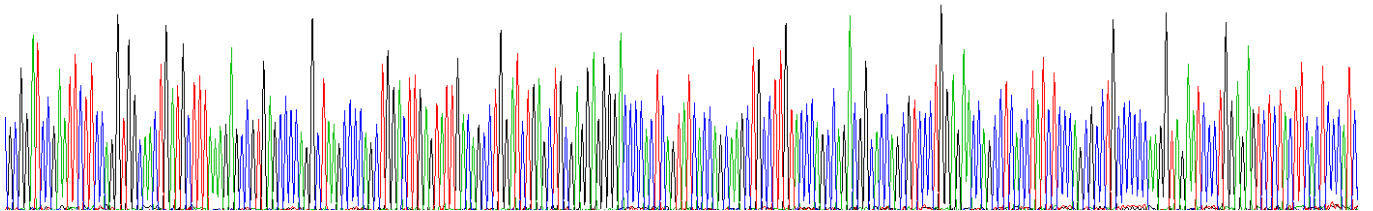


Figure . Gene Sequencing (extract)

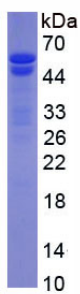


Figure. SDS-PAGE

[ IMPORTANT NOTE ]

The kit is designed for research use only, we will not be responsible for any issue if the kit was used in clinical diagnostic or any other procedures.