

RPD180Mu01 100µg

Recombinant Nucleobindin 2 (NUCB2)

Organism Species: *Mus musculus* (Mouse)

Instruction manual

FOR RESEARCH USE ONLY

NOT FOR USE IN CLINICAL DIAGNOSTIC PROCEDURES

13th Edition (Revised in Aug, 2023)

[PROPERTIES]

Source: Prokaryotic expression

Host: *E.coli*

Residues: Val25~Thr420

Tags: N-terminal His Tag

Subcellular Location: Membrane, Nucleus, Secreted, Cytoplasm, Golgi apparatus

Purity: > 97%

Traits: Freeze-dried powder

Buffer formulation: PBS, pH7.4, containing 0.01% SKL, 5% Trehalose .

Original Concentration: 200µg/mL

Applications: Positive Control; Immunogen; SDS-PAGE; WB.

(May be suitable for use in other assays to be determined by the end user.)

Predicted isoelectric point: 5.3

Predicted Molecular Mass: 51.1kDa

Accurate Molecular Mass: 51kDa as determined by SDS-PAGE reducing conditions.

[USAGE]

Reconstitute in 10mM PBS (pH7.4) to a concentration of 0.1-1.0 mg/mL. Do not vortex.

[STORAGE AND STABILITY]

Storage: Avoid repeated freeze/thaw cycles.

Store at 2-8°C for one month.

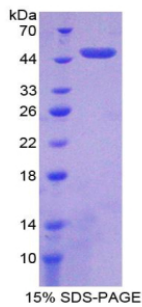
Aliquot and store at -80°C for 12 months.

Stability Test: The thermal stability is described by the loss rate. The loss rate was determined by accelerated thermal degradation test, that is, incubate the protein at 37°C for 48h, and no obvious degradation and precipitation were observed. The loss rate is less than 5% within the expiration date under appropriate storage condition.

[SEQUENCE]

			VPIDVD	KTKVHNTEPV	ENARIEPPDT	GLYYDEYLKQ
VIEVLETPH	FREKLQKADI	EEIRSGRLSQ	ELDLVSHKVR	TRLDELKRQE	VGRLRMLIKA	
KLDALQDTGM	NHLLLLKQFE	HLNHQNPNTF	ESRDLDMLIK	AATADLEQYD	RTRHEEFKKY	
EMMKEHERRE	YLKTLSEEKR	KEEESKFEEEM	KRKHEDHPKV	NHPGSKDQLK	EVWEETDGLD	
PNDFDPKTF	KLHDVMNDGF	LDEQELEALF	TRELEKVYNP	QNAEDDMIEM	EEERLRMREH	
VMSEIDNNKD	RLVTLEEF	ATEKKEFLEP	DSWETLDQQQ	LFTEDDELKEY	ESI IAIQENE	
LKKRAEELQK	QKEDLQRQHD	HLEAQKQEYH	QAVQHLEQKK	LQQGIAPSGP	AGELKFEPHT	

[IDENTIFICATION]



[IMPORTANT NOTE]

The kit is designed for research use only, we will not be responsible for any issue if the kit was used in clinical diagnostic or any other procedures.