

RPX274Ge01 10ug
Recombinant Nucleoprotein (NP)
Organism Species: *Pan-species (General)*
Instruction manual

FOR RESEARCH USE ONLY
NOT FOR USE IN CLINICAL DIAGNOSTIC PROCEDURES

12th Edition (Revised in Aug, 2016)

[PROPERTIES]

Source: Prokaryotic expression

Host: *E.coli*

Residues: Met1~Ala419

Tags: N-terminal His Tag

Subcellular Location: Secreted

Purity: > 90%

Traits: Freeze-dried powder

Buffer formulation: 20mM Tris, 150mM NaCl, pH8.0, containing 0.01% SKL, 5% Trehalose .

Original Concentration: 100µg/mL

Applications: Positive Control; Immunogen; SDS-PAGE; WB.

(May be suitable for use in other assays to be determined by the end user.)

Predicted isoelectric point: 10.7

Predicted Molecular Mass: 48.2kDa

Accurate Molecular Mass: 48kDa as determined by SDS-PAGE reducing conditions.

[USAGE]

Reconstitute in ddH₂O to a concentration of 0.1-1.0 mg/mL. Do not vortex.

[STORAGE AND STABILITY]

Storage: Avoid repeated freeze/thaw cycles.

Store at 2-8°C for one month.

Aliquot and store at -80°C for 12 months.

Stability Test: The thermal stability is described by the loss rate. The loss rate was determined by accelerated thermal degradation test, that is, incubate the protein at 37°C for 48h, and no obvious degradation and precipitation were observed. The loss rate is less than 5% within the expiration date under appropriate storage condition.

[SEQUENCE]

MSDNGPQNQRNAPRITFGGSDSTGSNQNERSGARSKQRRPQGLPNNTASWFTALTQHGKEDLKFRGQGVPIINTNSSPDDQIGYRR
ATRRIRGGDGKMKDLSPRWYFYLLGTGPEAGLPYGANKDGI IIVATEGALNTPKDHIGTRNPANNAIIVLQLPQGTTLPKGFYAEGSRG
GSQASSRSSRSRNSSRNSTPGSSRGTS PARMAGNGGDAALALLLDRLNQL ESKMSGKGQQQQGQTVTKKSAAEASKKPRQKRTATKA
YNVTFQAFGRRGPEQTQGNFGDQELIRQGTDYKHWPIAQFAPSASAFFGMSRIGMEVTPSGTWLTYTGAIKDDKDPNFKDQVILLNKH
IDAYKTFPPTPEPKDKKKKADETQALPQRQKKQQTVTLLPAADLDDFSKQLQQSMSSADSTQA

[IDENTIFICATION]



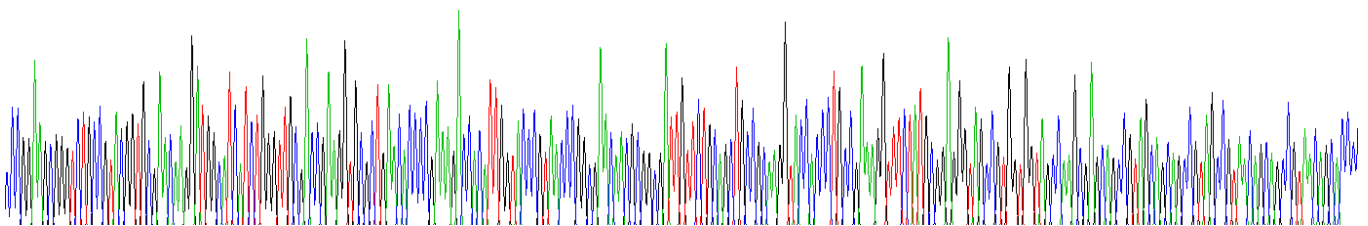


Figure . Gene Sequencing (extract)

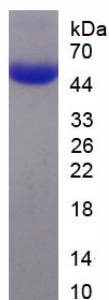


Figure. SDS-PAGE

[IMPORTANT NOTE]

The kit is designed for research use only, we will not be responsible for any issue if the kit was used in clinical diagnostic or any other procedures.