

**RPA569Hu01 50µg**

**Recombinant P-Selectin (SELP)**

**Organism Species: *Homo sapiens (Human)***

***Instruction manual***

FOR RESEARCH USE ONLY

NOT FOR USE IN CLINICAL DIAGNOSTIC PROCEDURES

---

13th Edition (Revised in Aug, 2023)

**[ PROPERTIES ]**

**Source:** Prokaryotic expression

**Host:** *E.coli*

**Residues:** Lys58~Glu195

**Tags:** N-terminal His Tag

**Subcellular Location:** Membrane

**Purity:** > 97%

**Traits:** Freeze-dried powder

**Buffer formulation:** PBS, pH7.4, containing 0.01% SKL, 5% Trehalose .

**Original Concentration:** 200µg/mL

**Applications:** Positive Control; Immunogen; SDS-PAGE; WB.

(May be suitable for use in other assays to be determined by the end user.)

**Predicted isoelectric point:** 6.69

**Predicted Molecular Mass:** 17.6kDa

**Accurate Molecular Mass:** 18kDa as determined by SDS-PAGE reducing conditions.

**[ USAGE ]**

Reconstitute in ddH<sub>2</sub>O to a concentration of 0.1-1.0 mg/mL. Do not vortex.

**[ STORAGE AND STABILITY ]**

**Storage:** Avoid repeated freeze/thaw cycles.

Store at 2-8°C for one month.

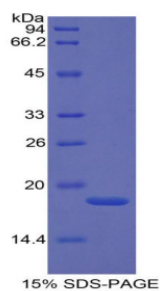
Aliquot and store at -80°C for 12 months.

**Stability Test:** The thermal stability is described by the loss rate. The loss rate was determined by accelerated thermal degradation test, that is, incubate the protein at 37°C for 48h, and no obvious degradation and precipitation were observed. The loss rate is less than 5% within the expiration date under appropriate storage condition.

**[ SEQUENCE ]**

Q<sub>N</sub>R<sub>Y</sub>T<sub>D</sub>L<sub>V</sub>A<sub>I</sub> Q<sub>N</sub>K<sub>N</sub>E<sub>I</sub>D<sub>Y</sub>L<sub>N</sub> K<sub>V</sub>L<sub>P</sub>Y<sub>Y</sub>S<sub>S</sub>Y<sub>Y</sub> W<sub>I</sub>G<sub>I</sub>R<sub>K</sub>N<sub>N</sub>K<sub>T</sub> W<sub>T</sub>W<sub>V</sub>G<sub>T</sub>K<sub>K</sub>A<sub>L</sub> T<sub>N</sub>E<sub>A</sub>E<sub>N</sub>W<sub>A</sub>D<sub>N</sub> KYC  
E<sub>P</sub>N<sub>N</sub>K<sub>R</sub>N<sub>M</sub>E<sub>D</sub> C<sub>V</sub>E<sub>I</sub>Y<sub>I</sub>K<sub>S</sub>P<sub>S</sub> A<sub>P</sub>G<sub>K</sub>W<sub>N</sub>D<sub>E</sub>H<sub>C</sub> L<sub>K</sub>K<sub>K</sub>H<sub>A</sub>L<sub>C</sub>Y<sub>T</sub> A<sub>S</sub>C<sub>Q</sub>D<sub>M</sub>S<sub>C</sub>S<sub>K</sub> Q<sub>G</sub>E<sub>C</sub>L<sub>E</sub>T<sub>I</sub>G<sub>N</sub>  
Y<sub>T</sub>C<sub>S</sub>C<sub>Y</sub>P<sub>G</sub>F<sub>Y</sub> G<sub>P</sub>E<sub>C</sub>E

**[ IDENTIFICATION ]**



**[ IMPORTANT NOTE ]**

The kit is designed for research use only, we will not be responsible for any issue if the kit was used in clinical diagnostic or any other procedures.