

RPA166Mu01 100µg

Recombinant Pepsinogen C (PGC)

Organism Species: *Mus musculus* (Mouse)

Instruction manual

FOR RESEARCH USE ONLY

NOT FOR USE IN CLINICAL DIAGNOSTIC PROCEDURES

13th Edition (Revised in Aug, 2023)

[PROPERTIES]

Source: Prokaryotic expression

Host: *E.coli*

Residues: Ala17~Val392

Tags: N-terminal His and GST Tag

Subcellular Location: Secreted

Purity: > 97%

Traits: Freeze-dried powder

Buffer formulation: PBS, pH7.4, containing 0.01% SKL, 5% Trehalose.

Original Concentration: 200µg/mL

Applications: Positive Control; Immunogen; SDS-PAGE; WB.

(May be suitable for use in other assays to be determined by the end user.)

Predicted isoelectric point: 4.42

Predicted Molecular Mass: 71.0kDa

Accurate Molecular Mass: 71kDa as determined by SDS-PAGE reducing conditions.

[USAGE]

Reconstitute in 10mM PBS (pH7.4) to a concentration of 0.1-1.0 mg/mL. Do not vortex.

[STORAGE AND STABILITY]

Storage: Avoid repeated freeze/thaw cycles.

Store at 2-8°C for one month.

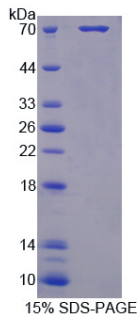
Aliquot and store at -80°C for 12 months.

Stability Test: The thermal stability is described by the loss rate. The loss rate was determined by accelerated thermal degradation test, that is, incubate the protein at 37°C for 48h, and no obvious degradation and precipitation were observed. The loss rate is less than 5% within the expiration date under appropriate storage condition.

[SEQUENCE]

ALIR VPLKKMKSIR ETMKEQGVLK DFLKNHKYDP
GQKYHFGKFG DYSVLYEPMA YMDASYGGEI SIGTPPQNFL VLFDTGSSNL
WVSSVYCQSE ACTTHTRYNP SKSSTYYTQG QTFSLQYGTG SLTGFFGYDT
LRVQSIQVPN QEFGLSENEP GTNFVYAQFD GIMGLAYPGL SSGGATTALQ
GMLGEGALSQ PLFGVYLG SQ QGSNCGQIVF GGVDENLYTG ELTWIPVTQE
LYWQITIDDF LIGNQASGWC SSSGCQGIVD TGTSLLVMPA QYLNELLQTI
GAQEGEYGQY FVSCDSVSSL PTLTFVLNGV QFPLSPSSYI IQEEGSCMVG
LESLSLNAES GQPLWILGDV FLRSYYAVFD MGNNRVGLAP SV

[IDENTIFICATION]



[IMPORTANT NOTE]

The kit is designed for research use only, we will not be responsible for any issue if the kit was used in clinical diagnostic or any other procedures.