

RPG477Mu01 200µg

Recombinant Phosphatidylserine Decarboxylase (PISD)

Organism Species: *Mus musculus* (Mouse)

Instruction manual

FOR RESEARCH USE ONLY

NOT FOR USE IN CLINICAL DIAGNOSTIC PROCEDURES

13th Edition (Revised in Aug, 2023)

[PROPERTIES]

Source: Prokaryotic expression

Host: *E.coli*

Residues: Met1~Leu406

Tags: N-terminal His Tag

Subcellular Location: Mitochondrion

Purity: > 90%

Traits: Freeze-dried powder

Buffer formulation: PBS, pH7.4, containing 0.01% SKL, 5% Trehalose .

Original Concentration: 500µg/mL

Applications: Positive Control; Immunogen; SDS-PAGE; WB.

(May be suitable for use in other assays to be determined by the end user.)

Predicted isoelectric point: 9.6

Predicted Molecular Mass: 49.6kDa

Accurate Molecular Mass: 50kDa as determined by SDS-PAGE reducing conditions.

[USAGE]

Reconstitute in 10mM PBS (pH7.4) to a concentration of 0.1-1.0 mg/mL. Do not vortex.

[STORAGE AND STABILITY]

Storage: Avoid repeated freeze/thaw cycles.

Store at 2-8°C for one month.

Aliquot and store at -80°C for 12 months.

Stability Test: The thermal stability is described by the loss rate. The loss rate was determined by accelerated thermal degradation test, that is, incubate the protein at 37°C for 48h, and no obvious degradation and precipitation were observed. The loss rate is less than 5% within the expiration date under appropriate storage condition.

[SEQUENCE]

MAASGGRACV RSLRGGVLWR SSPCHYESTA TRHFLGTLQK LPLQAGVRNF
HTAPVRSLF LLRPVPILLA TGGGYAGYRQ YEKYRERKLE KLGLEIPPKL A
SHWEVSLY KSVPTRLSR ACGRLNQVEL PYWLRRPVYS LYIWTFGVNM TE
AAVEDLH HYRNLSEFFR RKLKPQARPV CGLHCVTSPS DGKILTFGQV KNS
EVEQVK GVTYSLESFL GPRANTEDLP FPPASSSDSF RNQLVTREGN ELYH
CVIYL APGDYHCFHS PTDWTISHRR HFPGSLMSVN PGMARWIKEL FCHNE
RVVL TGDWKHGFPS LTAVGATNVG SIRIHFDRDL HTNSPRYSKG SYNDLS
FVT HANKEGIPMR KGEPLGEFNL GSTIVLIFEA PKDFNFRLKA GQKIRFG
EA LGSL

[IDENTIFICATION]

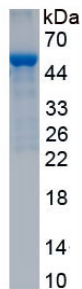


Figure. SDS-PAGE

[IMPORTANT NOTE]

The kit is designed for research use only, we will not be responsible for any issue if the kit was used in clinical diagnostic or any other procedures.