

RPB916Hu01 1mg

Recombinant Phosphatidylserine Receptor (PSR)

Organism Species: *Homo sapiens (Human)*

Instruction manual

FOR RESEARCH USE ONLY

NOT FOR USE IN CLINICAL DIAGNOSTIC PROCEDURES

13th Edition (Revised in Aug, 2023)

[PROPERTIES]

Source: Prokaryotic expression

Host: *E.coli*

Residues: Met1~Glu334

Tags: N-terminal His Tag

Subcellular Location: Secreted

Purity: > 90%

Traits: Freeze-dried powder

Buffer formulation: PBS, pH7.4, containing 0.01% SKL, 5% Trehalose .

Original Concentration: 100µg/mL

Applications: Positive Control; Immunogen; SDS-PAGE; WB.

(May be suitable for use in other assays to be determined by the end user.)

Predicted isoelectric point: 9.3

Predicted Molecular Mass: 43.1kDa

Accurate Molecular Mass: 43kDa as determined by SDS-PAGE reducing conditions.

[USAGE]

Reconstitute in ddH₂O to a concentration of 0.1-0.2 mg/mL. Do not vortex.

[STORAGE AND STABILITY]

Storage: Avoid repeated freeze/thaw cycles.

Store at 2-8°C for one month.

Aliquot and store at -80°C for 12 months.

Stability Test: The thermal stability is described by the loss rate. The loss rate was determined by accelerated thermal degradation test, that is, incubate the protein at 37°C for 48h, and no obvious degradation and precipitation were observed. The loss rate is less than 5% within the expiration date under appropriate storage condition.

[SEQUENCE]

MNHKSKKRIR EAKRSARPEL KDSLWTRHN YYESFSLSPA AVADNVERAD
 ALQLSVEEFV ERYERPYKPV VLLNAQEGWS AQEKWTLERL KRKYRNQKFK
 CGEDNDGYSV KMKMKYYIEY MESTRDDSPY YIFDSSYGEH PKRRKLLLEDY
 KVPKFFTDLL FQYAGEKRRP PYRWFVMGPP RSGTGIHIDP LGTSAWNALV
 QGHKRWCLFP TSTPRELIKV TRDEGGNQD EAITWFNVIY PRTQLPTWPP
 EFKPLEILQK PGETVFVPGG WWHVVLNLDI TIAITQNFAS STNFPVVVHK
 TVRGRPKLSR KWYRILKQEH PELAVLADSV DLQE

[IDENTIFICATION]

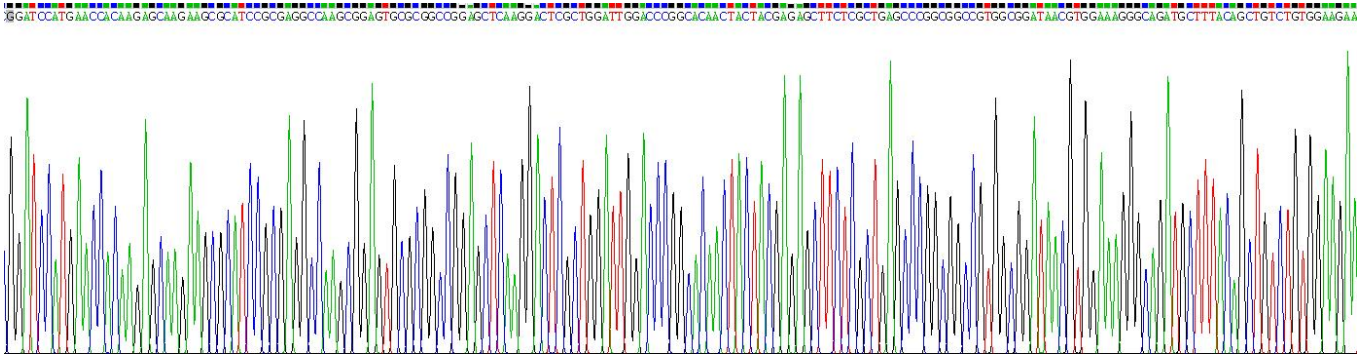
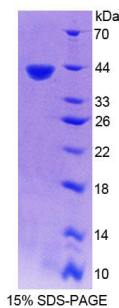


Figure . Gene Sequencing (extract)



[IMPORTANT NOTE]

The kit is designed for research use only, we will not be responsible for any issue if the kit was used in clinical diagnostic or any other procedures.