

RPD405Hu01 100µg

Recombinant Phosphofructokinase, Muscle (PFKM)

Organism Species: *Homo sapiens (Human)*

Instruction manual

FOR RESEARCH USE ONLY

NOT FOR USE IN CLINICAL DIAGNOSTIC PROCEDURES

13th Edition (Revised in Aug, 2023)

[PROPERTIES]

Source: Prokaryotic expression

Host: *E.coli*

Residues: Thr2-Val780

Tags: N-terminal His Tag

Subcellular Location: Cytoplasm

Purity: > 80%

Traits: Freeze-dried powder

Buffer formulation: PBS, pH7.4, containing 0.01% SKL, 5% Trehalose .

Original Concentration: 200µg/mL

Applications: Positive Control; Immunogen; SDS-PAGE; WB.

(May be suitable for use in other assays to be determined by the end user.)

Predicted isoelectric point: 8.1

Predicted Molecular Mass: 88.8kDa

Accurate Molecular Mass: 90kDa as determined by SDS-PAGE reducing conditions.

[USAGE]

Reconstitute in 10mM PBS (pH7.4) to a concentration of 0.1-1.0 mg/mL. Do not vortex.

[STORAGE AND STABILITY]

Storage: Avoid repeated freeze/thaw cycles.

Store at 2-8°C for one month.

Aliquot and store at -80°C for 12 months.

Stability Test: The thermal stability is described by the loss rate. The loss rate was determined by accelerated thermal degradation test, that is, incubate the protein at 37°C for 48h, and no obvious degradation and precipitation were observed. The loss rate is less than 5% within the expiration date under appropriate storage condition.

[SEQUENCE]

```

THEEHHAAKT LGIGKAI AVL TSGGDAQGMN AAVRAVVRVG IFTGARVFFV HEGYQGLVDG
GDHIKEATWE SVSMMLQLGG TVIGSARCKD FREREGRLRA AYNLVKRGIT NLCVIGGDGS
LTGADTFRSE WSDLLSDLQK AGKITDEEAT KSSYLNIVGL VGSIDNDFCG TDMTIGTDSA
LHRIMEIVDA ITTTAQSHQR TFVLEV MGRH CGYLALVTSL SCGADWVFIP ECPPDDDWEE
HLCRRLSETR TRGSRLNIII VAEGAIDKNG KPITSEDIKN LVVKRLGYDT RVTVLGHVQR
GGTPSAFDRI LGSRMGVEAV MALLEGTPDT PACVVSLSGN QAVRLPLMEC VQVTKDVTKA
MDEKKFDEAL KLRGRSFMNN WEVYKLLAHV RPPVSKSGSH TVAVMNVGAP AAGMNAAVRS
TVRIGLIQGN RVLVVDHGFE GLAKGQIEEA GWSYVGGWTG QGGSKLGTKR TLPKKSFEQI
SANITKFNIQ GLVIIGGFEA YTGLELMEG RKQFDELCIP FVVIPATVSN NVPGSDFSVG
ADTALNTICT TCDRIKQSAA GTKRRVFIIE TMGGYCGYLA TMAGLAAGAD AAYIFEFPFT
IRDLQANVEH LVQKMKT TVK RGLVLRNEKC NENYTTDFIF NLYSEEGKI FDSRKNVLGH
MQQGGSPFPF DRNFATKMGA KAMNWM SGI KESYRNGRIF ANTPDSGCVL GMRKRALVFQ
PVAELKDQTD FEHRIPKEQW WLKLRPILKI LAKYEIDLDT SDHAHLEHIT RKRSGEAAV
    
```

[IDENTIFICATION]

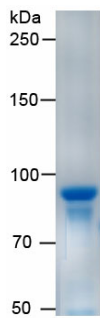


Figure. SDS-PAGE

[IMPORTANT NOTE]

The kit is designed for research use only, we will not be responsible for any issue if the kit was used in clinical diagnostic or any other procedures.