

**RPD833Hu01 50µg**

**Recombinant Phospholipase A2, Group X (PLA2G10)**

**Organism Species: *Homo sapiens (Human)***

***Instruction manual***

FOR RESEARCH USE ONLY

NOT FOR USE IN CLINICAL DIAGNOSTIC PROCEDURES

---

13th Edition (Revised in Aug, 2023)

**[ PROPERTIES ]**

**Source:** Prokaryotic expression

**Host:** *E.coli*

**Residues:** Glu32~Asp165

**Tags:** N-terminal His Tag

**Subcellular Location:** Secreted

**Purity:** > 95%

**Traits:** Freeze-dried powder

**Buffer formulation:** 100mMNaHCO<sub>3</sub>, 500mMNaCl, pH8.3, containing 0.01% SKL, 5% Trehalose.

**Original Concentration:** 1000µg/mL

**Applications:** Positive Control; Immunogen; SDS-PAGE; WB.

(May be suitable for use in other assays to be determined by the end user.)

**Predicted isoelectric point:** 6.1

**Predicted Molecular Mass:** 18.7KDa

**Accurate Molecular Mass:** 19kDa as determined by SDS-PAGE reducing conditions.

**[ USAGE ]**

Reconstitute in ddH<sub>2</sub>O to a concentration of 0.1-1.0 mg/mL. Do not vortex.

**[ STORAGE AND STABILITY ]**

**Storage:** Avoid repeated freeze/thaw cycles.

Store at 2-8°C for one month.

Aliquot and store at -80°C for 12 months.

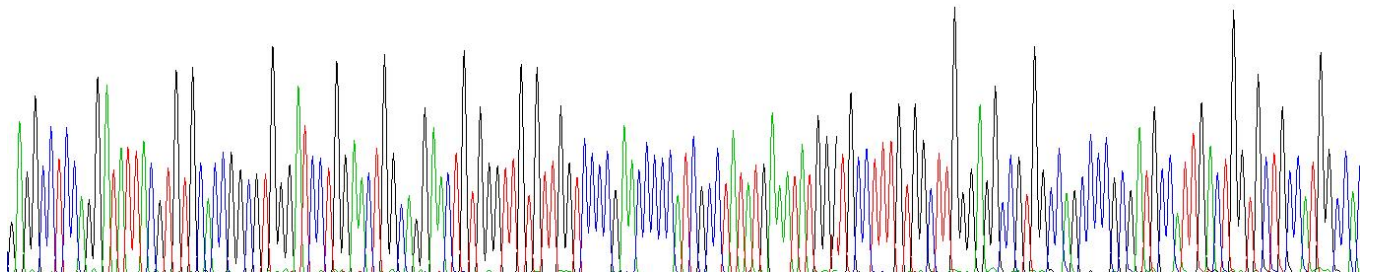
**Stability Test:** The thermal stability is described by the loss rate. The loss rate was determined by accelerated thermal degradation test, that is, incubate the protein at 37°C for 48h, and no obvious degradation and precipitation were observed. The loss rate is less than 5% within the expiration date under appropriate storage condition.

**[ SEQUENCE ]**

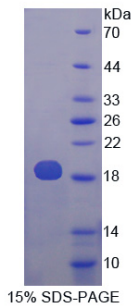
EASRILRVH RRGILELAGT  
 VGCVGPRTPI AYMKYGCF CG LGGHGQPRDA IDWCCHGHDC CYTRAE EAGC  
 SPKTERYSWQ CVNQSVLCGP AENKCQELLC KCDQEIANCL AQT EYNLKYL  
 FYPQFLCEPD SPKCD

**[ IDENTIFICATION ]**

GAGGCTCGAGGATATTACGTGTGCACCGGCGTGGGATCCTGGAACTGGCAGGAACGTGGGTGTGTGGTCCCGAAACCCCACTCGCCATATGAAATATGGCTGCCTTTGTGGCTTGGGAGGCCCCGTGGCCAGCCCCCGGATGCCATTGACTGGTGCCTGCCATGGCCAC  
 E A S R I L R V H R R G I L E L A G T V G C V G P R T P I A Y M K Y G C L C G L G G R G Q P R D A I D M C C H G H



**Figure. Gene Sequencing (Extract)**



**[ IMPORTANT NOTE ]**

The kit is designed for research use only, we will not be responsible for any issue if the kit was used in clinical diagnostic or any other procedures.