

RPA867Ca01 100µg
Recombinant Phospholipase A2 Group VII (LpPLA2)
Organism Species: *Canis familiaris*; Canine (Dog)
Instruction manual

FOR RESEARCH USE ONLY
NOT FOR USE IN CLINICAL DIAGNOSTIC PROCEDURES

13th Edition (Revised in Aug, 2023)

[PROPERTIES]

Source: Prokaryotic expression

Host: *E.coli*

Residues: Ile22~Asp444

Tags: N-terminal His Tag

Subcellular Location: Secreted, Extracellular matrix

Purity: > 97%

Traits: Freeze-dried powder

Buffer formulation: PBS, pH7.4, containing 0.01% SKL, 5% Trehalose .

Original Concentration: 200µg/mL

Applications: Positive Control; Immunogen; SDS-PAGE; WB.

(May be suitable for use in other assays to be determined by the end user.)

Predicted isoelectric point: 6.1

Predicted Molecular Mass: 49.1kDa

Accurate Molecular Mass: 50kDa as determined by SDS-PAGE reducing conditions.

[USAGE]

Reconstitute in 10mM PBS (pH7.4) to a concentration of 0.1-1.0 mg/mL. Do not vortex.

[STORAGE AND STABILITY]

Storage: Avoid repeated freeze/thaw cycles.

Store at 2-8°C for one month.

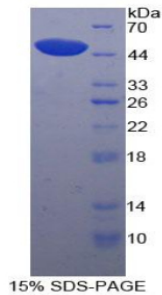
Aliquot and store at -80°C for 12 months.

Stability Test: The thermal stability is described by the loss rate. The loss rate was determined by accelerated thermal degradation test, that is, incubate the protein at 37°C for 48h, and no obvious degradation and precipitation were observed. The loss rate is less than 5% within the expiration date under appropriate storage condition.

[SEQUENCE]

		IDWQDLNPV	AHIRSSAWAN	KIQALMAAAS	IRQSRIPKGN
GSYSVGCTDL	MFDYTNKGTF	LRLYYPSQED	DHSDTLWIPN	KEYFFGLSKY	LGTPWLMGKI
LSFFFGSVTT	PANWNSPLRT	GEKYPLIVFS	HGLGAFRTIY	SAIGIDLASH	GFIVAAIEHR
DGSASATYYF	KDQSAAEIGN	KSWSYLQELK	PGDEEIHVRN	EQVQKRAKEC	SQALNLILDI
DHGRPIKNVL	DLEFDVEQLK	DSIDRDKIAV	IGHSFGGATV	LQALSEDQRF	RCGIALDAWM
LPLDDAIYSR	IPQLPFFINS	ERFQFPENIK	KMKKCYSPDK	ERKMITIRGS	VHQNFADFTF
TTGKIVGYIF	TLKGDIDSNV	AIDLCNKASL	AFLQKHLGLR	KDFDQWDSLI	EGKDENLMPG
TNINITNEHD	TLQNSPEAEK	SNLD			

[IDENTIFICATION]



[IMPORTANT NOTE]

The kit is designed for research use only, we will not be responsible for any issue if the kit was used in clinical diagnostic or any other procedures.