

RPA867Hu02 50µg

Recombinant Phospholipase A2 Group VII (LpPLA2)

Organism Species: *Homo sapiens (Human)*

Instruction manual

FOR RESEARCH USE ONLY

NOT FOR USE IN CLINICAL DIAGNOSTIC PROCEDURES

12th Edition (Revised in Aug, 2016)

[PROPERTIES]

Source: Prokaryotic expression

Host: *E.coli*

Residues: Phe22~Asn441

Tags: N-terminal His and GST Tag

Subcellular Location: Extracellular matrix

Purity: > 80%

Traits: Freeze-dried powder

Buffer formulation: PBS, pH7.4, containing 0.01% SKL, 5% Trehalose.

Original Concentration: 200µg/mL

Applications: Positive Control; Immunogen; SDS-PAGE; WB.

(May be suitable for use in other assays to be determined by the end user.)

Predicted isoelectric point: 7.1

Predicted Molecular Mass: 77.8kDa

Accurate Molecular Mass: 79kDa as determined by SDS-PAGE reducing conditions.

[USAGE]

Reconstitute in 10mM PBS (pH7.4) to a concentration of 0.1-1.0 mg/mL. Do not vortex.

[STORAGE AND STABILITY]

Storage: Avoid repeated freeze/thaw cycles.

Store at 2-8°C for one month.

Aliquot and store at -80°C for 12 months.

Stability Test: The thermal stability is described by the loss rate. The loss rate was determined by accelerated thermal degradation test, that is, incubate the protein at 37°C for 48h, and no obvious degradation and precipitation were observed. The loss rate is less than 5% within the expiration date under appropriate storage condition.

[SEQUENCE]

```

                FDWQYINPV AHMKSSAWVN KIQVLMMAAS
FGQTKIPRGN GPYSVGCTDL MFDHTNKGTF LRLYPSQDN DRLDTLWIPN
KEYFWGLSKF LGTHWLMGNI LRLLFSGMTT PANWNSPLRP GEKYPLVVFS
HGLGAFRTLY SAIGIDLASH GFIVAAVEHR DRASATYYF KDQSAAEIGD
KSWLYLRTLK QEEETHIRNE QVRQRAKECS QALSLILDID HGKPVKNALD
LKFDMEQLKD SIDREKIAVI GHSFGGATVI QTLSEDQRFR CGIALDAWMF
PLGDEVYSRI PQPLFFINSE YFQYPANIIK MKKCYS PDKE RKMITIRGSV
HQNFADFTFA TGKIIGHMLK LKGDIDSVA IDLSNKASLA FLQKHLGLHK
DFDQWDCLIE GDDENLIPGT NINTTNQHIM LQNSSGIEKY N
    
```

[IDENTIFICATION]

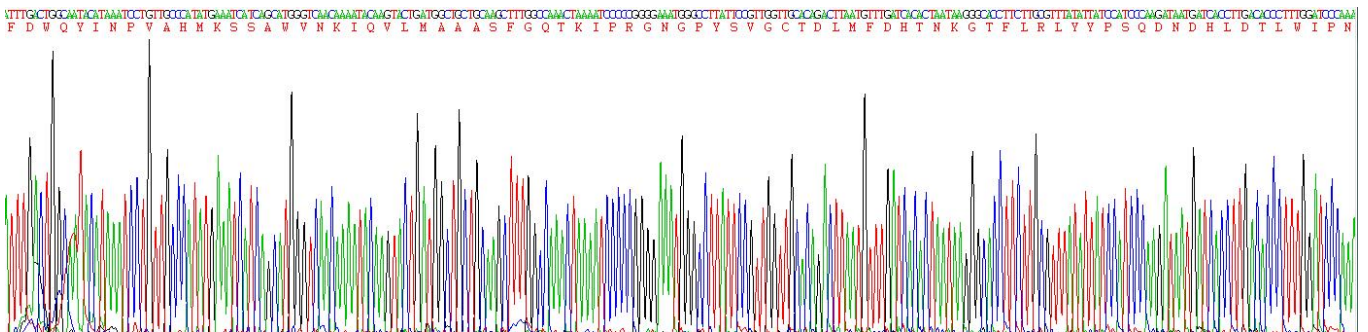


Figure . Gene Sequencing (extract)

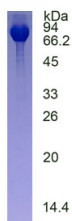


Figure. SDS-PAGE

[IMPORTANT NOTE]

The kit is designed for research use only, we will not be responsible for any issue if the kit was used in clinical diagnostic or any other procedures.