

RPA867Mu01 1mg
Recombinant Phospholipase A2 Group VII (LpPLA2)
Organism Species: *Mus musculus* (Mouse)
Instruction manual

FOR RESEARCH USE ONLY
NOT FOR USE IN CLINICAL DIAGNOSTIC PROCEDURES

12th Edition (Revised in Aug, 2016)

[PROPERTIES]

Source: Prokaryotic expression

Host: *E.coli*

Residues: Phe22~Asn440

Tags: N-terminal His Tag

Subcellular Location: Secreted, Extracellular matrix

Purity: > 95%

Traits: Freeze-dried powder

Buffer formulation: 20mM Tris, 150mM NaCl, pH8.0, containing 0.01% skl, 5%Trehalose.

Original Concentration: 100µg/mL

Applications: Positive Control; Immunogen; SDS-PAGE; WB.

(May be suitable for use in other assays to be determined by the end user.)

Predicted isoelectric point: 6.6

Predicted Molecular Mass: 48.1kDa

Accurate Molecular Mass: 48kDa as determined by SDS-PAGE reducing conditions.

[USAGE]

Reconstitute in ddH₂O to a concentration of 0.1-1.0 mg/mL. Do not vortex.

[STORAGE AND STABILITY]

Storage: Avoid repeated freeze/thaw cycles.

Store at 2-8°C for one month.

Aliquot and store at -80°C for 12 months.

Stability Test: The thermal stability is described by the loss rate. The loss rate was determined by accelerated thermal degradation test, that is, incubate the protein at 37°C for 48h, and no obvious degradation and precipitation were observed. The loss rate is less than 5% within the expiration date under appropriate storage condition.

[SEQUENCE]

```

                FHWQDTSSF DFRPSVMFHK LQSVMSAAGS
GHSKIPKNG SYPVGCTDLM FGYGNESV FV RLYYPAQDQG RLDTVWIPNK
EYFLGLSIFL GTPSIVGNIL HLLYGLSTTP ASWNSPLRTG EKYPLIVFSH
GLGAFRTIYS AIGIGLASNG FIVATVEHRD RSASATYFFE DQVAAKVENR
SWLYLRKVKQ EESESVRKEQ VQQRATIECSR ALSAILDIEH GDPKENVLGS
AFDMKQLKDA IDETKIALMG HSFSGATVLQ ALSEDQRFRC GVALDPWMYP
VNEELYSRTL QPLLFINSAK FQTPKDIAM KKFYQPKER KMITIKGSVH
QNFDFTFVT GKIIGNKLT LKGEIDSRVAI DLTKASMAF LQKHLGLQKD
FDQWDPLVEG DDENLIPGSP FDAVTQVPAQ QHSPGSQTQN
    
```

[IDENTIFICATION]

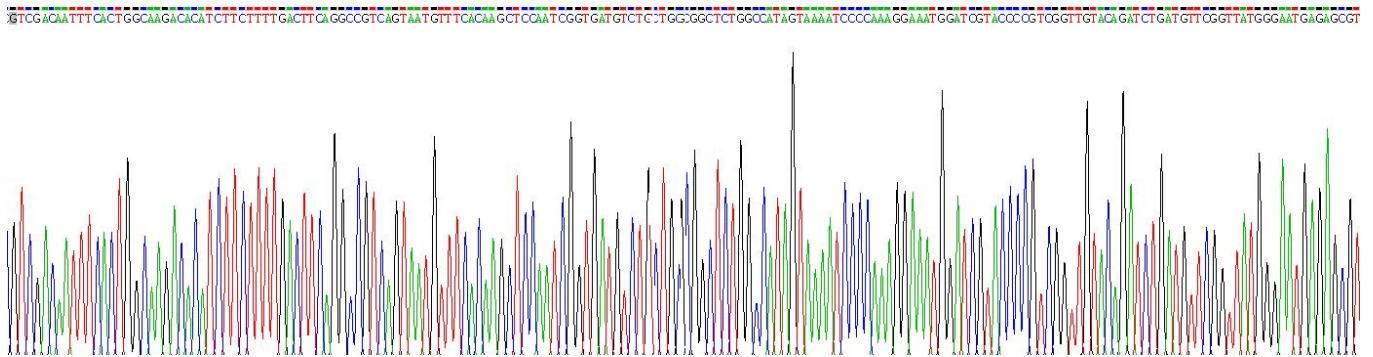


Figure . Gene Sequencing (extract)

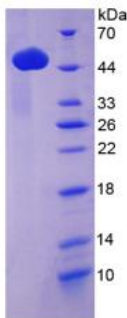


Figure. SDS-PAGE

[IMPORTANT NOTE]

The kit is designed for research use only, we will not be responsible for any issue if the kit was used in clinical diagnostic or any other procedures.