

**RPA867Mu02 100ug**  
**Recombinant Phospholipase A2 Group VII (LpPLA2)**  
**Organism Species: *Mus musculus* (Mouse)**  
***Instruction manual***

FOR RESEARCH USE ONLY  
NOT FOR USE IN CLINICAL DIAGNOSTIC PROCEDURES

---

13th Edition (Revised in Aug, 2023)

**[ PROPERTIES ]**

**Source:** Prokaryotic expression

**Host:** *E.coli*

**Residues:** Phe22~Asn440

**Tags:** N-terminal His and GST Tag

**Subcellular Location:** Secreted, Extracellular matrix

**Purity:** > 80%

**Traits:** Freeze-dried powder

**Buffer formulation:** PBS, pH7.4, containing 0.01% SKL, 5% Trehalose.

**Original Concentration:** 200µg/mL

**Applications:** Positive Control; Immunogen; SDS-PAGE; WB.

(May be suitable for use in other assays to be determined by the end user.)

**Predicted isoelectric point:** 6.6

**Predicted Molecular Mass:** 76.8kDa

**Accurate Molecular Mass:** 76kDa as determined by SDS-PAGE reducing conditions.

**[ USAGE ]**

Reconstitute in 10mM PBS (pH7.4) to a concentration of 0.1-1.0 mg/mL. Do not vortex.

**[ STORAGE AND STABILITY ]**

**Storage:** Avoid repeated freeze/thaw cycles.

Store at 2-8°C for one month.

Aliquot and store at -80°C for 12 months.

**Stability Test:** The thermal stability is described by the loss rate. The loss rate was determined by accelerated thermal degradation test, that is, incubate the protein at 37°C for 48h, and no obvious degradation and precipitation were observed. The loss rate is less than 5% within the expiration date under appropriate storage condition.

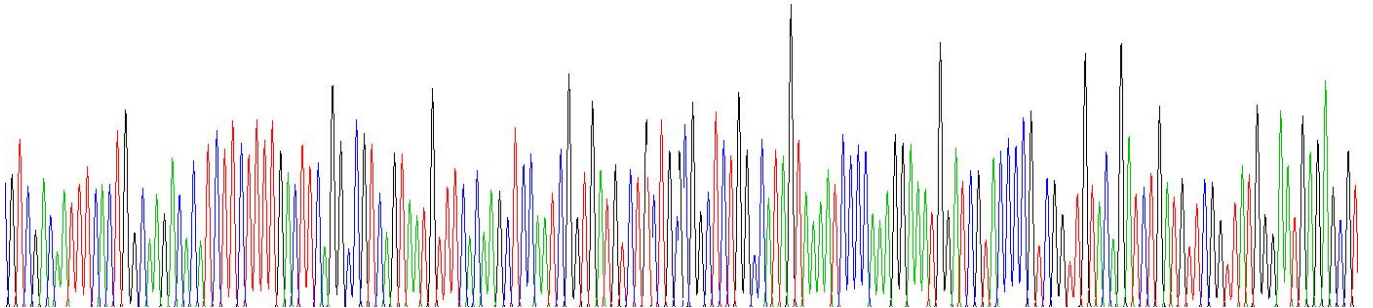
**[ SEQUENCE ]**

```

                FHWQDTSSF DFRPSVMFHK LQSVMSAAGS
GHSKIPKNG SYPVGCTDLM FGYGNESV FV RLYYPAQDQG RLDTVWIPNK
EYFLGLSIFL GTPSIVGNIL HLLYGLTTP ASWNSPLRTG EKYPLIVFSH
GLGAFRTIYS AIGIGLASNG FIVATVEHRD RSASATYFFE DQVAAKVENR
SWLYLRKVKQ EESESVRKEQ VQQR AIECSR ALSAILDIEH GDPKENVLGS
AFDMKQLKDA IDETKIALMG HSPGGATVLQ ALSEDQRFRC GVALDPWMYP
VNEELYSRTL QPLLFINSAK FQTPKDI AKM KKFYQPKER KMITIKGSVH
QNFD DFTFVT GKIIGNKLT L KGEIDSRVAI DLTNKASMAF LQKHLGLQKD
FDQWDPLVEG DDENLIPGSP FDAVTQVPAQ QHSPGSQTQN
    
```

**[ IDENTIFICATION ]**

ATGACAAATTTCACTGGCAAGACACATCTTCTTTTGACTTCAAGCCGTCAGTAATGTTTCACAA GCTCCAAATCGGTGATGTCTCTGGGGCTCTGGCCATAGTAAATCCCCAAAAGGAAATGGATCGTACCCCGTGGTGTGACAGATCTGATGTTGGTTATGGGAATGAGAGCGT



**Figure . Gene Sequencing (extract)**

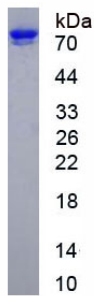


Figure. SDS-PAGE

**[ IMPORTANT NOTE ]**

The kit is designed for research use only, we will not be responsible for any issue if the kit was used in clinical diagnostic or any other procedures.