

RPB781Hu01 100ug

Recombinant Phospholipid Scramblase 1 (PLSCR1)

Organism Species: *Homo sapiens (Human)*

Instruction manual

FOR RESEARCH USE ONLY

NOT FOR USE IN CLINICAL DIAGNOSTIC PROCEDURES

13th Edition (Revised in Aug, 2023)

[PROPERTIES]

Source: Prokaryotic expression

Host: *E.coli*

Residues: Met1~Trp318

Tags: N-terminal His Tag

Subcellular Location: Membrane

Purity: > 97%

Traits: Freeze-dried powder

Buffer formulation: PBS, pH7.4, containing 0.01% SKL, 5% Trehalose.

Original Concentration: 200µg/mL

Applications: Positive Control; Immunogen; SDS-PAGE; WB.

(May be suitable for use in other assays to be determined by the end user.)

Predicted isoelectric point: 4.8

Predicted Molecular Mass: 38.7kDa

Accurate Molecular Mass: 39kDa as determined by SDS-PAGE reducing conditions.

[USAGE]

Reconstitute in 10mM PBS (pH7.4) to a concentration of 0.1-1.0 mg/mL. Do not vortex.

[STORAGE AND STABILITY]

Storage: Avoid repeated freeze/thaw cycles.

Store at 2-8°C for one month.

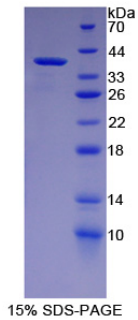
Aliquot and store at -80°C for 12 months.

Stability Test: The thermal stability is described by the loss rate. The loss rate was determined by accelerated thermal degradation test, that is, incubate the protein at 37°C for 48h, and no obvious degradation and precipitation were observed. The loss rate is less than 5% within the expiration date under appropriate storage condition.

[SEQUENCE]

MDKQNSQMNA SHPETNLPVG YPPQYPPTAF QGPPGYSGYP GPQVSYPPPP
AGHSGPGPAG FPVFNQPVYN QPVYNQPVGA AGVPWMPAQ PPLNCPGLE
YLSQIDQILI HQQIELLEVL TGFETNNKYE IKNSFGQRVY FAAEDTDCCT
RNCCGPSRPF TLRIIDNMGQ EVITLERPLR CSSCCCPCCL QEIEIQAPPG
VPIGYVIQTM HPCLPKFTIQ NEKREDVLKI SGPCVVCSCC GDVDFEIKSL
DEQCVVGKIS KHWTGILREA FTDADNFGIQ FPLDLVKMK AVMIGACFLI
DFMFFESTGS QEQKSGVW

[IDENTIFICATION]



[IMPORTANT NOTE]

The kit is designed for research use only, we will not be responsible for any issue if the kit was used in clinical diagnostic or any other procedures.