

**RPC728Hu01 10 $\mu$ g**

**Recombinant Phospholipid Transfer Protein (PLTP)**

**Organism Species: *Homo sapiens* (Human)**

***Instruction manual***

FOR RESEARCH USE ONLY

NOT FOR USE IN CLINICAL DIAGNOSTIC PROCEDURES

---

13th Edition (Revised in Aug, 2023)

**[ PROPERTIES ]**

**Source:** Prokaryotic expression

**Host:** *E.coli*

**Residues:** Val164~Val493

**Tags:** N-terminal His Tag

**Subcellular Location:** Nucleus, Secreted

**Purity:** > 90%

**Traits:** Freeze-dried powder

**Buffer formulation:** 20mM Tris, 150mM NaCl, pH8.0, containing 0.01% skl, 5%Trehalose.

**Original Concentration:** 200µg/mL

**Applications:** Positive Control; Immunogen; SDS-PAGE; WB.

(May be suitable for use in other assays to be determined by the end user.)

**Predicted isoelectric point:** 6.5

**Predicted Molecular Mass:** 40.2kDa

**Accurate Molecular Mass:** 40kDa as determined by SDS-PAGE reducing conditions.

**[ USAGE ]**

Reconstitute in 20mM Tris, 150mM NaCl (pH8.0) to a concentration of 0.1-1.0 mg/mL. Do not vortex.

**[ STORAGE AND STABILITY ]**

**Storage:** Avoid repeated freeze/thaw cycles.

Store at 2-8°C for one month.

Aliquot and store at -80°C for 12 months.

**Stability Test:** The thermal stability is described by the loss rate. The loss rate was determined by accelerated thermal degradation test, that is, incubate the protein at 37°C for 48h, and no obvious degradation and precipitation were observed. The loss rate is less than 5% within the expiration date under appropriate storage condition.

**[ SEQUENCE ]**

VYDFLST FITSGMRFL NQQICPVLYH AGTVLLNSLL  
 DTPVVRSSVD ELVGIDYSLM KDPVASTSNL DMDFRGAFFP LTERNWSLPN  
 RAVEPQLQEE ERMVYVAFSE FFFDSAMESY FRAGALQLLL VGDKVPDLD  
 MLLRATYFGS IVLLSPAVID SPLKLELRVL APPRCTIKPS GTTISVTASV  
 TIALVPPDQP EVQLSSMTMD ARLSAKMALR GKALRTQLDL RRFRIYSNHS  
 ALESLALIPL QAPLKTMLQI GVMPMLNERT WRGVQIPLPE GINFEHEVVT  
 NHAGFLTIGA DLHFAKGLRE VIEKNRPADV RASTAPTST AAV

**[ IDENTIFICATION ]**

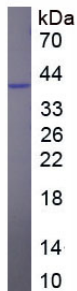


Figure. SDS-PAGE

**[ IMPORTANT NOTE ]**

The kit is designed for research use only, we will not be responsible for any issue if the kit was used in clinical diagnostic or any other procedures.