



RPB972Mu02 50µg
Recombinant Pigment Epithelium Derived Factor (PEDF)
Organism Species: *Mus musculus* (Mouse)
Instruction manual

FOR IN VITRO USE AND RESEARCH USE ONLY
NOT FOR USE IN CLINICAL DIAGNOSTIC PROCEDURES

12th Edition (Revised in Aug, 2016)

[**PROPERTIES**]

Source: Prokaryotic expression.

Host: *E. coli*

Residues: Leu125~Lys261

Tags: N-terminal His-Tag

Tissue Specificity: Liver, Stomach, Brain, Testis.

Subcellular Location: Secreted. Melanosome.

Purity: >98%

Traits: Freeze-dried powder

Buffer formulation: 10mM PBS, pH7.4, containing 1mM DTT, 5% trehalose 0.01% sarcosyl and Proclin300.

Original Concentration: 200µg/mL

Applications: Positive Control; Immunogen; SDS-PAGE; WB.

(May be suitable for use in other assays to be determined by the end user.)

Predicted isoelectric point: 9.9

Predicted Molecular Mass: 16.8kDa

Accurate Molecular Mass: 17&18&21kDa as determined by SDS-PAGE reducing conditions.

Phenomenon explanation:

The possible reasons that the actual band size differs from the predicted are as follows:

1. Splice variants: Alternative splicing may create different sized proteins from the same gene.
2. Relative charge: The composition of amino acids may affects the charge of the protein.
3. Post-translational modification: Phosphorylation, glycosylation, methylation etc.
4. Post-translation cleavage: Many proteins are synthesized as pro-proteins, and then cleaved to give the active form.
5. Polymerization of the target protein: Dimerization, multimerization etc.

[**USAGE**]

Reconstitute in 10mM PBS (pH7.4) to a concentration of 0.1-1.0 mg/mL. Do not vortex.

[STORAGE AND STABILITY]

Storage: Avoid repeated freeze/thaw cycles.

Store at 2-8°C for one month.

Aliquot and store at -80°C for 12 months.

Stability Test: The thermal stability is described by the loss rate. The loss rate was determined by accelerated thermal degradation test, that is, incubate the protein at 37°C for 48h, and no obvious degradation and precipitation were observed. The loss rate is less than 5% within the expiration date under appropriate storage condition.

[SEQUENCE]

```
                LASVTA PEKNLKSASR IVFERKLRVK  
SSFVAPLEKS YGTRPRILTG NPRVDLQEIN NwVQAQMKGK IARSTREMP  
ALSILLGVA YFKGQWTKF DSRKTTLQDF HLDEDRTVRV PMMSDPKAIL  
RYGLSDLNC K
```

[IDENTIFICATION]

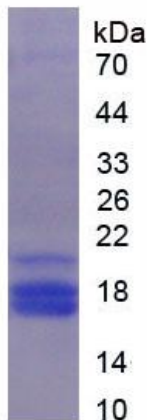


Figure 1. SDS-PAGE