

RPB972Rb01 100µg

Recombinant Pigment Epithelium Derived Factor (PEDF)

Organism Species: *Oryctolagus cuniculus* (Rabbit)

Instruction manual

FOR RESEARCH USE ONLY

NOT FOR USE IN CLINICAL DIAGNOSTIC PROCEDURES

13th Edition (Revised in Aug, 2023)

[PROPERTIES]

Source: Prokaryotic expression

Host: *E.coli*

Residues: Gln20~Thr418

Tags: N-terminal His Tag

Subcellular Location: Extracellular matrix

Purity: > 95%

Traits: Freeze-dried powder

Buffer formulation: PBS, pH7.4, containing 0.01% SKL, 5% Trehalose .

Original Concentration: 200µg/mL

Applications: Positive Control; Immunogen; SDS-PAGE; WB.

(May be suitable for use in other assays to be determined by the end user.)

Predicted isoelectric point: 6.8

Predicted Molecular Mass: 47.9kDa

Accurate Molecular Mass: 50kDa as determined by SDS-PAGE reducing conditions.

[USAGE]

Reconstitute in 10mM PBS (pH7.4) to a concentration of 0.1-1.0 mg/mL. Do not vortex.

[STORAGE AND STABILITY]

Storage: Avoid repeated freeze/thaw cycles.

Store at 2-8°C for one month.

Aliquot and store at -80°C for 12 months.

Stability Test: The thermal stability is described by the loss rate. The loss rate was determined by accelerated thermal degradation test, that is, incubate the protein at 37°C for 48h, and no obvious degradation and precipitation were observed. The loss rate is less than 5% within the expiration date under appropriate storage condition.

[SEQUENCE]

QSIASSPEEG SPAPDGTGPP LEEDDPFFKV PVNKLAAVS NFGYDLYRQR SAESPTANVL
 LSPLSVATAL SALS LGAEQR TESLIQRALY YDLISNPDIH GTYKELLA AV TAPQKNLKSA
 SRIIFERKLR IKSSFVAPLE KAYGTRPRVL SGNPRDLQE LNGWVQAQMK GKVARSAREV
 PSDISIFLLG VAYFKGQWVT KFDSRKTSLQ DFHLDEERTV RVPMMSDPKA TLR YGLDSDL
 NCKIAQLPLT GSMSIIFFLP LRPTQNLTLI EESLTSEFIH DIDRELKTIQ AALSIPRLKL
 SFEGEVTKAL QEIKLQPLFE SPDFSKITGK PIKLTHVEHR AGFEWNEDGA ATSPGP EVQP
 ARLAFSLDYH LNQPFI FVLR DSDTGALLFV GKILDPRGT

[IDENTIFICATION]

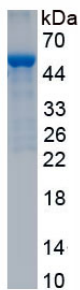


Figure. SDS-PAGE

[IMPORTANT NOTE]

The kit is designed for research use only, we will not be responsible for any issue if the kit was used in clinical diagnostic or any other procedures.