

RPC919Mu01 100µg
Recombinant Platelet Derived Growth Factor D (PDGFD)
Organism Species: *Mus musculus* (Mouse)
Instruction manual

FOR RESEARCH USE ONLY
NOT FOR USE IN CLINICAL DIAGNOSTIC PROCEDURES

12th Edition (Revised in Aug, 2016)

[PROPERTIES]

Source: Prokaryotic expression

Host: *E.coli*

Residues: Thr24~Arg364

Tags: N-terminal His Tag

Subcellular Location: Secreted

Purity: > 97%

Traits: Freeze-dried powder

Buffer formulation: 20mM Tris, 150mM NaCl, pH8.0, containing 0.01% SKL, 5% Trehalose.

Original Concentration: 200µg/mL

Applications: Positive Control; Immunogen; SDS-PAGE; WB.

(May be suitable for use in other assays to be determined by the end user.)

Predicted isoelectric point: 7.9

Predicted Molecular Mass: 43.2kDa

Accurate Molecular Mass: 50kDa as determined by SDS-PAGE reducing conditions.

Phenomenon explanation:

The possible reasons that the actual band size differs from the predicted are as follows:

1. Splice variants: Alternative splicing may create different sized proteins from the same gene.
2. Relative charge: The composition of amino acids may affect the charge of the protein.
3. Post-translational modification: Phosphorylation, glycosylation, methylation etc.
4. Post-translation cleavage: Many proteins are synthesized as pro-proteins, and then cleaved to give the active form.
5. Polymerization of the target protein: Dimerization, multimerization etc.

[USAGE]

Reconstitute in 20mM Tris, 150mM NaCl (pH8.0) to a concentration of 0.1-1.0 mg/mL. Do not vortex.

[STORAGE AND STABILITY]

Storage: Avoid repeated freeze/thaw cycles.

Store at 2-8°C for one month.

Aliquot and store at -80°C for 12 months.

Stability Test: The thermal stability is described by the loss rate. The loss rate was determined by accelerated thermal degradation test, that is, incubate the protein at 37°C for 48h, and no obvious degradation and precipitation were observed. The loss rate is less than 5% within the expiration date under appropriate storage condition.

[SEQUENCE]

```

                                TPQRASI  KALRNANLRR  DDLYQREENI
QVTSNGHVQS  PRFPNSYPRN  LLLTWLRSQ  EKTRIQLSFD  HQFGLEEAEN
DICRYDFVEV  EEVSESSTVV  RGRWCGHKEI  PPRITSRTNQ  IKITFKSDDY
FVAKPGFKIY  YSFVEDFQPE  AASETNWESV  TSSFSGVSYH  SPSITDPTLT
ADALDKTVAE  FDTVEDLLKH  FNPVSWQDDL  ENLYLDTPHY  RGRSYHDRKS
KVDLDRLNDD  VKRYSCTPRN  HSVNLREELK  LTNAVFFPRC  LLVQRCGGNC
GCGTVNWKSC  TCSSGKTVKK  YHEVLKFEPG  HFKRRGKAKN  MALVDIQLDH
HERCDCICSS  RPPR
    
```

[IDENTIFICATION]

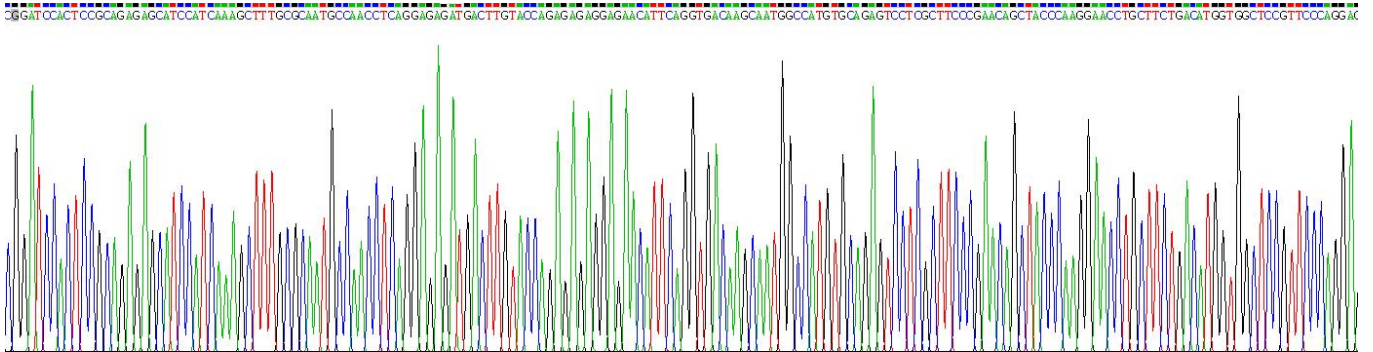


Figure . Gene Sequencing (extract)

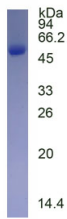


Figure. SDS-PAGE

[IMPORTANT NOTE]

The kit is designed for research use only, we will not be responsible for any issue if the kit was used in clinical diagnostic or any other procedures.