

**RPH358Hu02 100µg**

**Recombinant Plexin B1 (PLXNB1)**

**Organism Species: *Homo sapiens (Human)***

***Instruction manual***

FOR RESEARCH USE ONLY

NOT FOR USE IN CLINICAL DIAGNOSTIC PROCEDURES

---

12th Edition (Revised in Aug, 2016)

**[ PROPERTIES ]**

**Source:** Prokaryotic expression

**Host:** *E.coli*

**Residues:** Tyr200~Gly727

**Tags:** N-terminal His Tag

**Subcellular Location:** Membrane, Secreted

**Purity:** > 90%

**Traits:** Freeze-dried powder

**Buffer formulation:** 20mM Tris, 150mM NaCl, pH8.0, containing 1mM EDTA, 1mM DTT, 0.01% SKL, 5% Trehalose and Proclin300.

**Original Concentration:** 200µg/mL

**Applications:** Positive Control; Immunogen; SDS-PAGE; WB.

(May be suitable for use in other assays to be determined by the end user.)

**Predicted isoelectric point:** 5.3

**Predicted Molecular Mass:** 59.7kDa

**Accurate Molecular Mass:** 60kDa as determined by SDS-PAGE reducing conditions.

**[ USAGE ]**

Reconstitute in 20mM Tris, 150mM NaCl (pH8.0) to a concentration of 0.1-1.0 mg/mL. Do not vortex.

**[ STORAGE AND STABILITY ]**

**Storage:** Avoid repeated freeze/thaw cycles.

Store at 2-8°C for one month.

Aliquot and store at -80°C for 12 months.

**Stability Test:** The thermal stability is described by the loss rate. The loss rate was determined by accelerated thermal degradation test, that is, incubate the protein at 37°C for 48h, and no obvious degradation and precipitation were observed. The loss rate is less than 5% within the expiration date under appropriate storage condition.

**[ SEQUENCE ]**

Y

EETAKLAVGR LSEYSHHFVS AFARGASAYF LFLRRDLQAQ SRAFRAYVSR  
VCLRDQHYYS YVELPLACEG GRYGLIQAAA VATSREVAHG EVLFAAFSSA  
APPTVGRPPS AAAGASGASA LCAFPLDEVD RLANRTRDAC YTREGRAEDG  
TEVAYIEYDV NSDCAQLPVD TLDAYPCGSD HTPSPMASRV PLEATPILEW  
PGIQLTAVAV TMEDGHTIAF LGDSQGQLHR VYLGPGSDGH PYSTQSIQQG  
SAVSRDLTFD GTFEHLVYMT QSTLLKVPVA SCAQHLD CAS CLAHRDPYCG  
WCVLLGRCSR RSECSRQGP EQWLWSFQPE LGCLQVAAMS PANISREETR  
EVFLSVPDLP PLWPGESYSC HFGEHQSPAL LTGSGVMCPS PDPSEAPVLP  
RGADYVSVSV ELRFGAVVIA KTSLSFYDCV AVTELRPSAQ CQACVSSRWG  
CNWCWQHLC THKASCDAGP MVASHQSPLV SPDPPARGGP SPSPTAPKA  
LATPAPDTLP VEPGAPSTAT ASDISPG

**[ IDENTIFICATION ]**

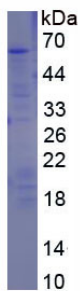


Figure. SDS-PAGE

**[ IMPORTANT NOTE ]**

The kit is designed for research use only, we will not be responsible for any issue if the kit was used in clinical diagnostic or any other procedures.