

**RPP807Hu01 10ug**

**Recombinant Poly ADP Ribose Glycohydrolase (PARG)**

**Organism Species: *Homo sapiens (Human)***

***Instruction manual***

FOR RESEARCH USE ONLY

NOT FOR USE IN CLINICAL DIAGNOSTIC PROCEDURES

---

12th Edition (Revised in Aug, 2016)

**[ PROPERTIES ]**

**Source:** Prokaryotic expression

**Host:** *E.coli*

**Residues:** Ser448~Thr976

**Tags:** N-terminal His Tag

**Subcellular Location:** Secreted

**Purity:** > 95%

**Traits:** Freeze-dried powder

**Buffer formulation:** PBS, pH7.4, containing 0.01% SKL, 5% Trehalose.

**Original Concentration:** 150µg/mL

**Applications:** Positive Control; Immunogen; SDS-PAGE; WB.

(May be suitable for use in other assays to be determined by the end user.)

**Predicted isoelectric point:** 7.3

**Predicted Molecular Mass:** 64.8kDa

**Accurate Molecular Mass:** 61kDa as determined by SDS-PAGE reducing conditions.

**[ USAGE ]**

Reconstitute in 10mM PBS (pH7.4) to a concentration of 0.1-1.0 mg/mL. Do not vortex.

**[ STORAGE AND STABILITY ]**

**Storage:** Avoid repeated freeze/thaw cycles.

Store at 2-8°C for one month.

Aliquot and store at -80°C for 12 months.

**Stability Test:** The thermal stability is described by the loss rate. The loss rate was determined by accelerated thermal degradation test, that is, incubate the protein at 37°C for 48h, and no obvious degradation and precipitation were observed. The loss rate is less than 5% within the expiration date under appropriate storage condition.

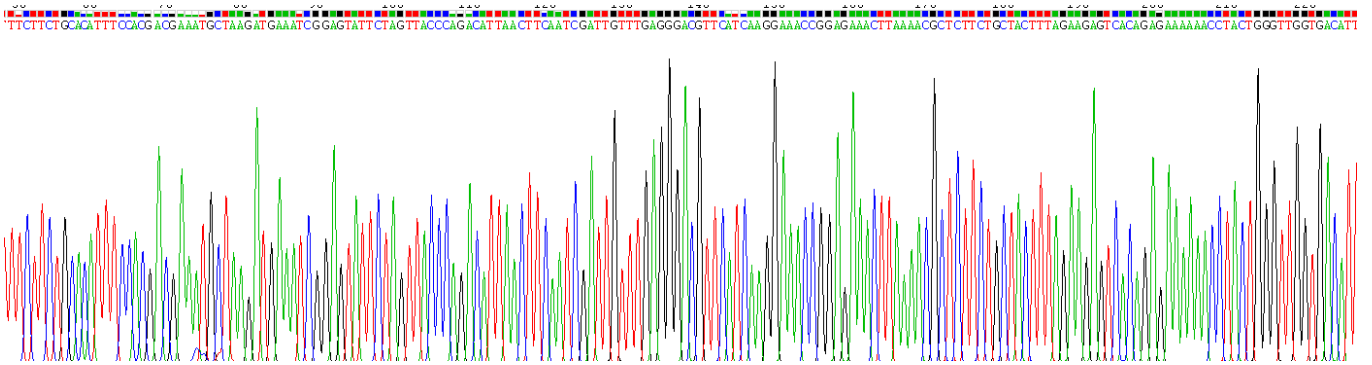
**[ SEQUENCE ]**

SPD

```

KKWLGTPIEE MRRMPCGIR LPLLPSANH TVTIRVDLLR AGEVPKPFPT
HYKDLWDNKH VKMPCSEQNL YPVEDENGER TAGSRWELIQ TALLNKFTRP
QNLKDAILKY NVAYSKKWDF TALIDFWDKV LEEAEAQHLY QSILPDMVKI
ALCLPNICTQ PIPLLKQKMN HSITMSQEIQ ASLLANAFFC TFPRRNAKMK
SEYSSYPDIN FNRLFEGRSS RKPEKLTFLF CYFRRVTEKK PTGLVTFTRQ
SLEDFPEWER CEKPLTRLHV TYEGTIEENG QGMLQVDFAN RFVGGGV TSA
GLVQEEIRFL INPELIISRL FTEVL DHNEC LIITGTEQYS EYTGYAETYR
WSRSHEDGSE RDDWQRRCTE IVAIDALHFR RYLDQFVPEK MRRELNKAYC
GFLRPGVSSE NLSAVATGNW GCGAFGGDAR LKALIQILAA AAAERDVVYF
TFGDSSELMRD IYSMHIFLTE RKLTVGDVYK LLLRYYNEEC RNCSTPGPDI
KLYPFIYHAV ESCAETADHS QRTGT
    
```

**[ IDENTIFICATION ]**



**Figure . Gene Sequencing (extract)**

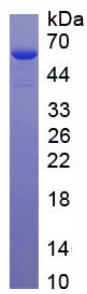


Figure. SDS-PAGE

**[ IMPORTANT NOTE ]**

The kit is designed for research use only, we will not be responsible for any issue if the kit was used in clinical diagnostic or any other procedures.