

RPP807Hu02 10µg

Recombinant Poly ADP Ribose Glycohydrolase (PARG)

Organism Species: *Homo sapiens (Human)*

Instruction manual

FOR RESEARCH USE ONLY

NOT FOR USE IN CLINICAL DIAGNOSTIC PROCEDURES

13th Edition (Revised in Aug, 2023)

[PROPERTIES]

Source: Prokaryotic expression

Host: *E.coli*

Residues: Met1~Thr976

Tags: N-terminal His Tag

Subcellular Location: Secreted

Purity: > 97%

Traits: Freeze-dried powder

Buffer formulation: 20mM Tris, 150mM NaCl, pH8.0, containing 1mM EDTA, 1mM DTT, 0.01% SKL, 5% Trehalose and Proclin300.

Original Concentration: 200µg/mL

Applications: Positive Control; Immunogen; SDS-PAGE; WB.

(May be suitable for use in other assays to be determined by the end user.)

Predicted isoelectric point: 6.4

Predicted Molecular Mass: 114.8kDa

Accurate Molecular Mass: 115kDa as determined by SDS-PAGE reducing conditions.

[USAGE]

Reconstitute in 20mM Tris, 150mM NaCl (pH8.0) to a concentration of 0.1-1.0 mg/mL. Do not vortex.

[STORAGE AND STABILITY]

Storage: Avoid repeated freeze/thaw cycles.

Store at 2-8°C for one month.

Aliquot and store at -80°C for 12 months.

Stability Test: The thermal stability is described by the loss rate. The loss rate was determined by accelerated thermal degradation test, that is, incubate the protein at 37°C for 48h, and no obvious degradation and precipitation were observed. The loss rate is less than 5% within the expiration date under appropriate storage condition.

[SEQUENCE]

```

MNAGPGCEPC TKRPRWGAAT TSPAASDARS FPSRQRRVLD PKDAHVQFRV
PPSSPACVPG RAGQHRGSAT SLVFKQKTIT SWMDTKGIKT AEESLDSKE
NNNTRIESMM SSVQKDNFYQ HNVEKLENSV QLSLDKSPTE KSTQYLNQHQ
TAAMCKWQNE GKHTEQLLES EPQTVTLVPE QFSNANIDRS PQNDDHSDTD
SEENRDNQQF LTTVKLANAK QTTEDEQARE AKSHQKCSKS CDPGEDCASC
QQDEIDVVPE SPLSDVGSSE VGTGPKNDNK LTRQESCLGN SPPFEKESEP
ESPMQVDNSK NSCQDSEADE ETSPGFDEQE DGSSSQTANK PSRFQARDAD
IEFRKRYSTK GGEVRLHFQF EGGESRTGMN DLNAKLPGNI SSLNVECRNS
KQHGKKSISKI TDHFMRLPKA EDRRKEQWET KHQRTERKIP KYVPPHLSPD
KKWLGTPIEE MRRMPRCGIR LPLLRSANH TVTIRVDLLR AGEVPKPFPT
HYKDLWDNKH VKMPCSEQNL YPVEDENGER TAGSRWELIQ TALLNKFTRP
QNLKDAILKY NVAYSKKWDF TALIDFWDKV LEEAEAQHLV QSILPDMVKI
ALCLPNICTQ PIPLLKQKMN HSITMSQEQI ASLLANAFFC TFPRRNAKMK
SEYSSYPDIN FNRLFEGRSS RKPEKLKTLF CYFRRVTEKK PTGLVTFTRQ
SLEDFPEWER CEKPLTRLHV TYEGTIEENG QGMLQVDFAN RFVGGGV TSA
GLVQEEIRFL INPELIISRL FTEVL DHNEC LIITGTEQYS EYTGAE TYR
WSRSHEDGSE RDDWQRCTE IVAIDALHFR RYLDQFVPEK MRRELNKAYC
GFLRPGVSSE NLSAVATGNW GCGAFGGDAR LKALIQILAA AAAERDVVYF
TFGDSELMRD IYSMHIFLTE RKLTVGDVYK LLLRYYNEEC RNCSTPGPDI
KLYPFIYHAV ESCAETADHS GQRTGT
    
```

[IDENTIFICATION]

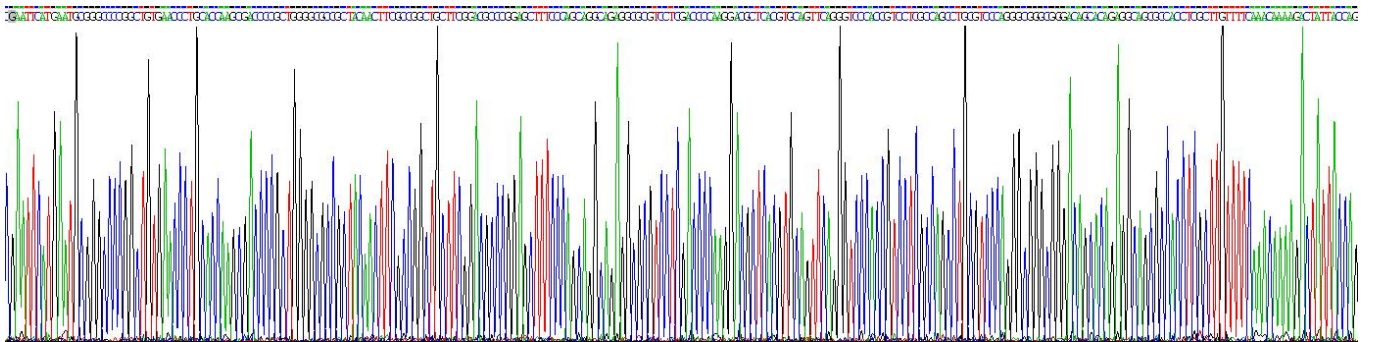


Figure . Gene Sequencing (extract)

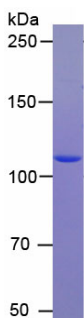


Figure. SDS-PAGE

[IMPORTANT NOTE]

The kit is designed for research use only, we will not be responsible for any issue if the kit was used in clinical diagnostic or any other procedures.