

RPH437Hu01 10µg

Recombinant Polybromo 1 (PBRM1)

Organism Species: *Homo sapiens* (Human)

Instruction manual

FOR RESEARCH USE ONLY

NOT FOR USE IN CLINICAL DIAGNOSTIC PROCEDURES

12th Edition (Revised in Aug, 2016)

[PROPERTIES]

Source: Prokaryotic expression

Host: *E.coli*

Residues: Met1~Ala306

Tags: N-terminal His and GST Tag

Subcellular Location: Nucleus

Purity: > 90%

Traits: Freeze-dried powder

Buffer formulation: 20mM Tris, 150mM NaCl, pH8.0, containing 0.01% SKL, 5% Trehalose and Proclin300.

Original Concentration: 200µg/mL

Applications: Positive Control; Immunogen; SDS-PAGE; WB.

(May be suitable for use in other assays to be determined by the end user.)

Predicted isoelectric point: 6.5

Predicted Molecular Mass: 65.0kDa

Accurate Molecular Mass: 65kDa as determined by SDS-PAGE reducing conditions.

[USAGE]

Reconstitute in 20mM Tris, 150mM NaCl (pH8.0) to a concentration of 0.1-1.0 mg/mL. Do not vortex.

[STORAGE AND STABILITY]

Storage: Avoid repeated freeze/thaw cycles.

Store at 2-8°C for one month.

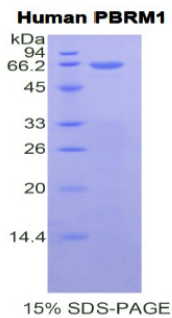
Aliquot and store at -80°C for 12 months.

Stability Test: The thermal stability is described by the loss rate. The loss rate was determined by accelerated thermal degradation test, that is, incubate the protein at 37°C for 48h, and no obvious degradation and precipitation were observed. The loss rate is less than 5% within the expiration date under appropriate storage condition.

[SEQUENCE]

MGSKRRRATS PSSSVSGDFD DGHHSVSTPG PSRKRRRLSN LPTVDPIAVC
HELYNTIRDY KDEQGRLLCE LFIRAPKRRN QPDYYEVVSQ PIDLMKIQQK
LKMEEYDDVN LLTADFQLLF NNAKSYYKPD SPEYKAACKL WDLYLTRNE
FVQKGEADDE DDEDEGQDNQ GTVTEGSSPA YLKEILEQLL EAIIVVATNPS
GRLISELFQK LPSKVQYPDY YAIIKEPIDL KTIAQRIQNG SYKSIHAMAK
DIDLLAKNAK TYNEPGSQVF KDANSIKKIF YMKKAIEIEHH EMAKSSLRMR
TPSNLA

[IDENTIFICATION]



[IMPORTANT NOTE]

The kit is designed for research use only, we will not be responsible for any issue if the kit was used in clinical diagnostic or any other procedures.