

**RPH428Hu01 50µg**

**Recombinant Prenylcysteine Oxidase 1 (PCYOX1)**

**Organism Species: *Homo sapiens (Human)***

***Instruction manual***

FOR RESEARCH USE ONLY

NOT FOR USE IN CLINICAL DIAGNOSTIC PROCEDURES

---

13th Edition (Revised in Aug, 2023)

**[ PROPERTIES ]**

**Source:** Prokaryotic expression

**Host:** *E.coli*

**Residues:** Tyr174~Leu505

**Tags:** N-terminal His and GST Tag

**Subcellular Location:** Lysosome

**Purity:** > 95%

**Traits:** Freeze-dried powder

**Buffer formulation:** PBS, pH7.4, containing 0.01% SKL, 5% Trehalose .

**Original Concentration:** 350µg/mL

**Applications:** Positive Control; Immunogen; SDS-PAGE; WB.

(May be suitable for use in other assays to be determined by the end user.)

**Predicted isoelectric point:** 5.5

**Predicted Molecular Mass:** 67.3kDa

**Accurate Molecular Mass:** 67kDa as determined by SDS-PAGE reducing conditions.

**[ USAGE ]**

Reconstitute in 10mM PBS (pH7.4) to a concentration of 0.1-1.0 mg/mL. Do not vortex.

**[ STORAGE AND STABILITY ]**

**Storage:** Avoid repeated freeze/thaw cycles.

Store at 2-8°C for one month.

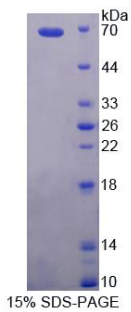
Aliquot and store at -80°C for 12 months.

**Stability Test:** The thermal stability is described by the loss rate. The loss rate was determined by accelerated thermal degradation test, that is, incubate the protein at 37°C for 48h, and no obvious degradation and precipitation were observed. The loss rate is less than 5% within the expiration date under appropriate storage condition.

**[ SEQUENCE ]**

YAFSSVE KLLHALGGDD FLGMLNRTLL  
ETLQKAGFSE KFLNEMIAPV MRVNYGQSTD INAFVGAVSL SCSDSGLWAV  
EGGNKLVCSG LLQASKSNLI SGSVMYIEEK TKTKYTGNTPT KMYEVVYQIG  
TETRSDFYDI VLVATPLNRK MSNITFLNFD PPIIEEFHQYY QHIVTTLVKG  
ELNTSIFSSR PIDKFG LNTV LTTDNSDLFI NSIGIVPSVR EKEDPEPSTD  
GTYVWKIFSQ ETLTKAQILK LFLSYDYAVK KPWLAYPHYK PPEKCPSIIL  
HDRLYYLNGI ECAASAMEMS AIAAHNAALL AYHRWNGHTD MIDQDGLYEK  
LKTEL

**[ IDENTIFICATION ]**



**[ IMPORTANT NOTE ]**

The kit is designed for research use only, we will not be responsible for any issue if the kit was used in clinical diagnostic or any other procedures.