

**RPB316Hu02 50µg**  
**Recombinant Procollagen C-Endopeptidase Enhancer (PCOLCE)**  
**Organism Species: *Homo sapiens* (Human)**  
***Instruction manual***

FOR RESEARCH USE ONLY  
NOT FOR USE IN CLINICAL DIAGNOSTIC PROCEDURES

---

12th Edition (Revised in Aug, 2016)

## [ **PROPERTIES** ]

**Source:** Prokaryotic expression

**Host:** *E.coli*

**Residues:** Gly38~Asp449

**Tags:** N-terminal His Tag

**Subcellular Location:** Secreted

**Purity:** > 95%

**Traits:** Freeze-dried powder

**Buffer formulation:** 20mM Tris, 150mM NaCl, pH8.0, containing 0.01% skl, 5%Trehalose.

**Original Concentration:** 200µg/mL

**Applications:** Positive Control; Immunogen; SDS-PAGE; WB.

(May be suitable for use in other assays to be determined by the end user.)

**Predicted isoelectric point:** 7.5

**Predicted Molecular Mass:** 47.8kDa

**Accurate Molecular Mass:** 48kDa as determined by SDS-PAGE reducing conditions.

## [ **USAGE** ]

Reconstitute in 20mM Tris, 150mM NaCl (pH8.0) to a concentration of 0.1-1.0 mg/mL. Do not vortex.

## [ **STORAGE AND STABILITY** ]

**Storage:** Avoid repeated freeze/thaw cycles.

Store at 2-8°C for one month.

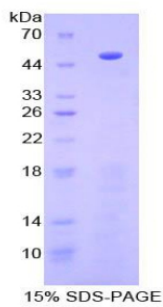
Aliquot and store at -80°C for 12 months.

**Stability Test:** The thermal stability is described by the loss rate. The loss rate was determined by accelerated thermal degradation test, that is, incubate the protein at 37°C for 48h, and no obvious degradation and precipitation were observed. The loss rate is less than 5% within the expiration date under appropriate storage condition.

## [ **SEQUENCE** ]

				GGD VKGESGYVAS
EGFPNLYPPN	KECIWTITVP	EQQTVSLSFR	VFDLELHPAC	RYDALEVAFG
SGTSGQRLGR	FCGTFRPAPL	VAPGNQVTLR	MTTDEGTGGR	GFLLWYSGRA
TSGTEHQFCG	GRLEKAQCTL	TTPNWPESDY	PPGISCSWHI	IAPPDQVIAL
TFEKFDLEPD	TYCRYDSVSV	FNGAVSDDSR	RLGKFCGDAV	PGSISSEGNE
LLVQFVSDLS	VTADGFSASY	KTLPRGTAKE	GQGPCKRGT	EPKVKLPPKS
QPPEKTEESP	SAPDAPCPK	QCRRTGTLQS	NFCASSLVVT	ATVKSMVREP
GGLAVTVSL	IGAYKTGGLD	LPSPTGASL	KFYVPCKQCP	PMKKGVSYLL
MGQVEENRGP	VLPPEFVVL	HRPNQDQILT	NLSKRKCPSQ	PVRAAASQD

**[ IDENTIFICATION ]**



**[ IMPORTANT NOTE ]**

The kit is designed for research use only, we will not be responsible for any issue if the kit was used in clinical diagnostic or any other procedures.