



**RPA740Hu01 10 $\mu$ g**

**Recombinant Prostaglandin I Synthase (PTGIS)**

**Organism Species: Homo sapiens (Human)**

***Instruction manual***

FOR IN VITRO USE AND RESEARCH USE ONLY  
NOT FOR USE IN CLINICAL DIAGNOSTIC PROCEDURES

---

12th Edition (Revised in Aug, 2016)

## [ **PROPERTIES** ]

**Source:** Prokaryotic expression.

**Host:** *E. coli*

**Residues:** Met1~Pro500

**Tags:** N-terminal His-Tag

**Tissue Specificity:** Ovary, Heart, Lung.

**Subcellular Location:** Endoplasmic reticulum membrane. Single-pass membrane protein.

**Purity:** >95%

**Traits:** Freeze-dried powder

**Buffer formulation:** 20mM Tris, 150mM NaCl, pH8.0, containing 1mM EDTA, 1mM DTT, 0.01% sarcosyl, 5%Trehalose and Proclin300.

**Original Concentration:** 200µg/mL

**Applications:** Positive Control; Immunogen; SDS-PAGE; WB.

(May be suitable for use in other assays to be determined by the end user.)

**Predicted isoelectric point:** 6.8

**Predicted Molecular Mass:** 60.8kDa

**Accurate Molecular Mass:** 61kDa as determined by SDS-PAGE reducing conditions.

## [ **USAGE** ]

Reconstitute in 20mM Tris, 150mM NaCl (pH8.0) to a concentration of 0.1-1.0 mg/mL. Do not vortex.

## [ **STORAGE AND STABILITY** ]

**Storage:** Avoid repeated freeze/thaw cycles.

Store at 2-8°C for one month.

Aliquot and store at -80°C for 12 months.

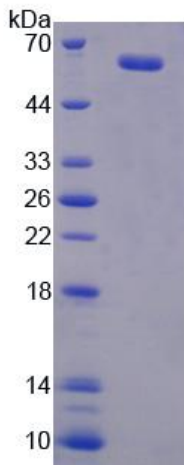
**Stability Test:** The thermal stability is described by the loss rate. The loss rate was determined by accelerated thermal degradation test, that is, incubate the protein at 37°C for 48h, and no obvious degradation and precipitation were observed. The loss rate is less than 5% within the expiration date under appropriate storage condition.

**[ SEQUENCE ]**

```

MAWAALLGLL AALLLLLLLS RRRTRRPGEPLDLGSIPWLYALDFGKDA
ASFLTRMKEK HGDIFTILVG GRYVTVLLDP HSYDAVVWEP RTRLDFHAYA
IFLMERIFDV QLPHYSPSDE KARMKLTLRHRELQALTEAM YTNLHAVLLG
DATEAGSGWH EMGLLDFFSYS FLLRAGYLTLYGIEALPRTH ESQAQDRVHS
ADVFTFRQL DRLLPKLARG SLSVGDKDHMCVKSRLWKL LSPARLARRA
HRSKWLESYL LHLEEMGVSE EMQARALVLQLWATQGNMGP AAFWLLLFLL
KNPEALAAVR GELESILWQAEQPVSQTTTLPQKVL DSTPV LDSVLSESLR
LTAAPFITRE VVDLAMPMA DGREFNLRRG DRLLLPFLSPQRDPEIYTD
PEVFKYNRFL NPDGSEKKDF YKDGKRLKNYNMPWGAGHNC LGRSYAVNS
IKQFVFLVLV HLDLELINAD VEIPEFDLSRYGFGLMQPEH DVPVRYRIRP
    
```

**[ IDENTIFICATION ]**



**Figure 1. SDS-PAGE**