

**RPC512Hu01 10µg**

**Recombinant Prostate-specific Membrane Antigen (PMSA)**

**Organism Species: *Homo sapiens* (Human)**

***Instruction manual***

FOR RESEARCH USE ONLY

NOT FOR USE IN CLINICAL DIAGNOSTIC PROCEDURES

---

12th Edition (Revised in Aug, 2016)

**[ PROPERTIES ]**

**Source:** Prokaryotic expression

**Host:** *E.coli*

**Residues:** Ala274~Leu587

**Tags:** N-terminal His Tag

**Subcellular Location:** Membrane

**Purity:** > 95%

**Traits:** Freeze-dried powder

**Buffer formulation:** 20mM Tris, 150mM NaCl, pH8.0, containing 0.01% skl, 5%Trehalose.

**Original Concentration:** 350µg/mL

**Applications:** Positive Control; Immunogen; SDS-PAGE; WB.

(May be suitable for use in other assays to be determined by the end user.)

**Predicted isoelectric point:** 7.3

**Predicted Molecular Mass:** 39.1kDa

**Accurate Molecular Mass:** 39kDa as determined by SDS-PAGE reducing conditions.

**[ USAGE ]**

Reconstitute in 20mM Tris, 150mM NaCl (pH8.0) to a concentration of 0.1-1.0 mg/mL. Do not vortex.

**[ STORAGE AND STABILITY ]**

**Storage:** Avoid repeated freeze/thaw cycles.

Store at 2-8°C for one month.

Aliquot and store at -80°C for 12 months.

**Stability Test:** The thermal stability is described by the loss rate. The loss rate was determined by accelerated thermal degradation test, that is, incubate the protein at 37°C for 48h, and no obvious degradation and precipitation were observed. The loss rate is less than 5% within the expiration date under appropriate storage condition.

**[ SEQUENCE ]**

```

ANEYAYR  RGIAEAVGLP  SIPVHPIGY
DAQKLEKMG  GSAPPDSSWR  GSLKVPYNVG  PGFTGNFSTQ  KVKMHIHSTN
EVTRIYNVIG  TLRGAVEPDR  YVILGGHRDS  WVFGGIDPQS  GAAVVHEIVR
SFGTLKKEGW  RPRRTILFAS  WDAEEFLLG  STEWAEENSR  LLQERGVAYI
NADSSIEGNY  TLRVDCTPLM  YSLVHNLTK  LKSPDEGFEG  KSLYESWTKK
SPSPEFSGMP  RISKLGSGND  FEVFFQRLGI  ASGRARYTKN  WETNKFSGYP
LYHSVYETYE  LVEKFYDPMF  KYHLTVAQVR  GGMVFEL
    
```

**[ IDENTIFICATION ]**

TTCCAAATGAATATGCTTATAGGGGTGSAATTGCAGAGGCTGTTGGCTTCAGATTCCTGTTTCATCAATTCGATCTATGATGCACAGAGCTCTAGAAAAATGGGTGGCTCGACACACGATAGCAGCTGGGAGGAGTCTCAAGTGCCTCAATGTTGGCTCTGCTTACTGGAACTTTTCTACAAAAAGTCAG

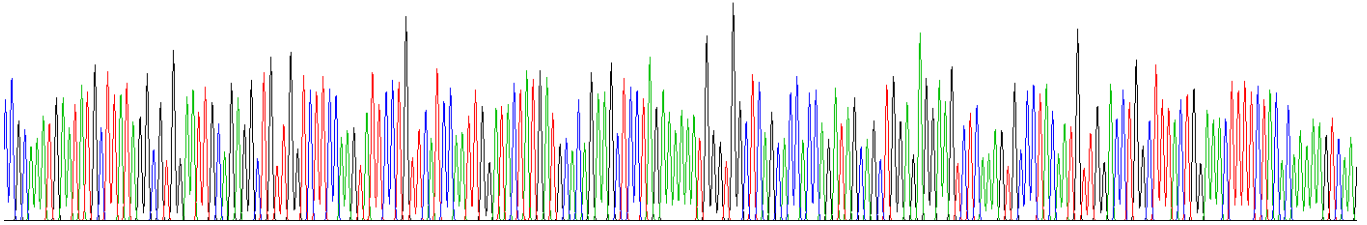


Figure . Gene Sequencing (extract)

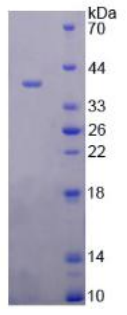


Figure. SDS-PAGE

**[ IMPORTANT NOTE ]**

The kit is designed for research use only, we will not be responsible for any issue if the kit was used in clinical diagnostic or any other procedures.