

RPH313Hu01 100µg
Recombinant Protein Kinase, cGMP Dependent Type II (PRKG2)
Organism Species: Homo sapiens (Human)
Instruction manual

FOR IN VITRO USE AND RESEARCH USE ONLY
NOT FOR USE IN CLINICAL DIAGNOSTIC PROCEDURES

12th Edition (Revised in Aug, 2016)

[PROPERTIES]

Source: Prokaryotic expression.

Host: *E. coli*

Residues: Leu453~Leu728

Tags: Two N-terminal Tags, His-tag and GST-tag

Tissue Specificity: Intestine, Prostate Gland.

Subcellular Location: Apical cell membrane; Lipid-anchor.

Purity: >94%

Traits: Freeze-dried powder

Buffer formulation: 20mM Tris, 150mM NaCl, pH8.0, containing 1mM EDTA, 1mM DTT, 0.01% sarcosyl, 5%Trehalose and Proclin300.

Original Concentration: 200µg/mL

Applications: Positive Control; Immunogen; SDS-PAGE; WB.

(May be suitable for use in other assays to be determined by the end user.)

Predicted isoelectric point: 8.9

Predicted Molecular Mass: 61.8kDa

Accurate Molecular Mass: 62kDa as determined by SDS-PAGE reducing conditions.

[USAGE]

Reconstitute in 20mM Tris, 150mM NaCl (pH8.0) to a concentration of 0.1-1.0 mg/mL. Do not vortex.

[STORAGE AND STABILITY]

Storage: Avoid repeated freeze/thaw cycles.

Store at 2-8°C for one month.

Aliquot and store at -80°C for 12 months.

Stability Test: The thermal stability is described by the loss rate. The loss rate was determined by accelerated thermal degradation test, that is, incubate the protein at 37°C for 48h, and no obvious degradation and precipitation were observed. The loss rate is less than 5% within the expiration date under appropriate storage condition.

[SEQUENCE]

LEIIATLG VGGFGRVELV KVKNENVAFA MKCIRKKHIV DTKQQEHVYS
EKRILEEELCS PFIVKLYRTF KDNKYVYMLL EACLGELWS ILDRGSFDE
PTSKFCVACV TEAFDYLHRL GIIYRDLKPE NLILDAEGLY KLVDGFAKK
IGSGQKTWTF CGTPEYVAPE VILNKGHDFS VDFWSLGILV YELLTGNPPF
SGVDQMMTYN LILKGIEKMD FPRKITRPE DLIRRLCRQN PTERLGNLKN
GINDIKKHRW LNGFNWEGLK ARSLPSPL

[IDENTIFICATION]

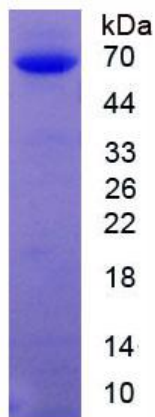


Figure 1. SDS-PAGE