

RPA494Hu01 10µg
Recombinant Protein Kinase C Theta (PKCθ)
Organism Species: *Homo sapiens (Human)*
Instruction manual

FOR RESEARCH USE ONLY
NOT FOR USE IN CLINICAL DIAGNOSTIC PROCEDURES

12th Edition (Revised in Aug, 2016)

[**PROPERTIES**]

Source: Prokaryotic expression

Host: *E.coli*

Residues: Phe380~Phe634

Tags: N-terminal His and GST Tag

Subcellular Location: Membrane, Cytoplasm

Purity: > 90%

Traits: Freeze-dried powder

Buffer formulation: 20mM Tris, 150mM NaCl, pH8.0, containing 0.01% skl, 5%Trehalose.

Original Concentration: 150µg/mL

Applications: Positive Control; Immunogen; SDS-PAGE; WB.

(May be suitable for use in other assays to be determined by the end user.)

Predicted isoelectric point: 6.4

Predicted Molecular Mass: 59.8kDa

Accurate Molecular Mass: 60kDa as determined by SDS-PAGE reducing conditions.

[**USAGE**]

Reconstitute in 20mM Tris, 150mM NaCl (pH8.0) to a concentration of 0.1-1.0 mg/mL. Do not vortex.

[**STORAGE AND STABILITY**]

Storage: Avoid repeated freeze/thaw cycles.

Store at 2-8°C for one month.

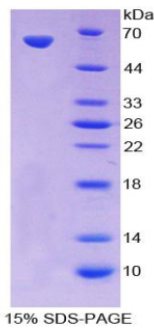
Aliquot and store at -80°C for 12 months.

Stability Test: The thermal stability is described by the loss rate. The loss rate was determined by accelerated thermal degradation test, that is, incubate the protein at 37°C for 48h, and no obvious degradation and precipitation were observed. The loss rate is less than 5% within the expiration date under appropriate storage condition.

[**SEQUENCE**]

F ILHKMLGKGS FGKVFLAEFK
KTNQFFAIKA LKKDVMLMDD DVECTMVEKR VLSLAWEHPF LTHMFCTFQT
KENLFFVMEY LNGGDLMYHI QSCHKFDLSR ATFYAAEIIL GLQFLHSGI
VYRDLKLDNI LLDKDGHIKI ADFGMCKENM LGDAKTNTFC GTPDYIAPEI
LLGQKYNHSV DWWSFGVLLY EMLIGQSPFH GQDEEELFHS IRMDNPFYPR
WLEKEAKDLL VKLFFVREPEK RLGVRGDIRQ HPLF

[IDENTIFICATION]



[IMPORTANT NOTE]

The kit is designed for research use only, we will not be responsible for any issue if the kit was used in clinical diagnostic or any other procedures.