

RPE068Hu01 50µg
Recombinant Protocadherin Beta 8 (PCDHb8)
Organism Species: *Homo sapiens (Human)*
Instruction manual

FOR RESEARCH USE ONLY
NOT FOR USE IN CLINICAL DIAGNOSTIC PROCEDURES

12th Edition (Revised in Aug, 2016)

[PROPERTIES]

Source: Prokaryotic expression

Host: *E.coli*

Residues: Ser61~Ser220

Tags: N-terminal His Tag

Subcellular Location: Secreted

Purity: > 90%

Traits: Freeze-dried powder

Buffer formulation: PBS, pH7.4, containing 0.01% SKL, 5% Trehalose.

Original Concentration: 3000µg/mL

Applications: Positive Control; Immunogen; SDS-PAGE; WB.

(May be suitable for use in other assays to be determined by the end user.)

Predicted isoelectric point: 4.8

Predicted Molecular Mass: 21.9kDa

Accurate Molecular Mass: 23kDa as determined by SDS-PAGE reducing conditions.

[USAGE]

Reconstitute in 10mM PBS (pH7.4) to a concentration of 0.1-1.0 mg/mL. Do not vortex.

[STORAGE AND STABILITY]

Storage: Avoid repeated freeze/thaw cycles.

Store at 2-8°C for one month.

Aliquot and store at -80°C for 12 months.

Stability Test: The thermal stability is described by the loss rate. The loss rate was determined by accelerated thermal degradation test, that is, incubate the protein at 37°C for 48h, and no obvious degradation and precipitation were observed. The loss rate is less than 5% within the expiration date under appropriate storage condition.

[SEQUENCE]

SRRGVRVVSARGNKLHLQLNQETADLLLNEKLDREDLCGHTEPCVLRFRQVLLLESPFEFFQAEIQVIDINDHSPVFLDKQMLVKVSESSP
PGTAFPLKNAEDLDIGQNNIENYIISPNSYFRVLTRKRS DGRKYPELVLDKALDREEEAELRLTLTALDGGG

[IDENTIFICATION]

G A T T C T C A G G G G G G G G T T A G G S T T G T T C A G G G S A C A A A C T A G A T T T G A C T C A A T C A G G A G A C C G G G A T T T C T G C T A A T G A G A A T T G G A C C G G G G G C T G T G C G G T C G C A G A C C C T G T G T C T A G G T T T C A A G T G T C T A G G A G A C C T T G A G T T T T C A A G C T G A C T T G A G T A A G A G C A C T C T G G T A T T C T G A G A

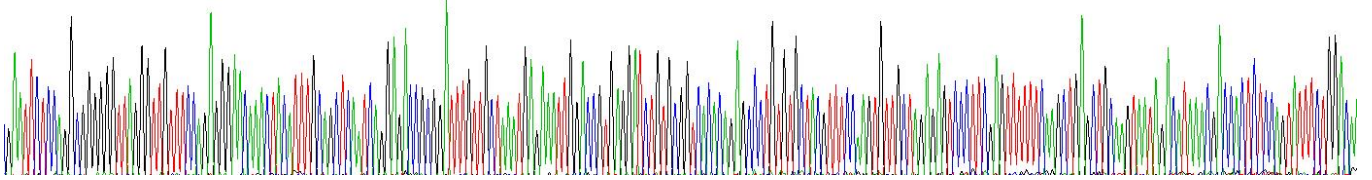


Figure . Gene Sequencing (extract)

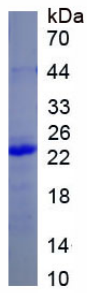


Figure. SDS-PAGE

[IMPORTANT NOTE]

The kit is designed for research use only, we will not be responsible for any issue if the kit was used in clinical diagnostic or any other procedures.