

**RPD949Mu01 1**

**Recombinant RAR Related Orphan Receptor Gamma (RORg)**

**Organism Species: *Mus musculus* (Mouse)**

***Instruction manual***

FOR RESEARCH USE ONLY

NOT FOR USE IN CLINICAL DIAGNOSTIC PROCEDURES

---

13th Edition (Revised in Aug, 2023)

## [ **PROPERTIES** ]

**Source:** Prokaryotic expression

**Host:** *E.coli*

**Residues:** Asp267~Lys516

**Tags:** N-terminal His Tag

**Subcellular Location:** Nucleus

**Purity:** > 90%

**Traits:** Freeze-dried powder

**Buffer formulation:** PBS, pH7.4, containing 0.01% SKL, 5% Trehalose.

**Original Concentration:** 100µg

**Applications:** Positive Control; Immunogen; SDS-PAGE; WB.

(May be suitable for use in other assays to be determined by the end user.)

**Predicted isoelectric point:** 7.3

**Predicted Molecular Mass:** 32.7kDa

**Accurate Molecular Mass:** 33kDa as determined by SDS-PAGE reducing conditions.

## [ **USAGE** ]

Reconstitute in 10mM PBS (pH7.4) to a concentration of 0.1-1.0 mg/mL. Do not vortex.

## [ **STORAGE AND STABILITY** ]

**Storage:** Avoid repeated freeze/thaw cycles.

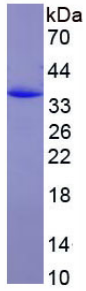
Store at 2-8°C for one month.

Aliquot and store at -80°C for 12 months.

**Stability Test:** The thermal stability is described by the loss rate. The loss rate was determined by accelerated thermal degradation test, that is, incubate the protein at 37°C for 48h, and no obvious degradation and precipitation were observed. The loss rate is less than 5% within the expiration date under appropriate storage condition.

## [ **SEQUENCE** ]

DI EY+LVQNVCKSFRET CQLRLEDLLRQRTNLF SR E E V T S Y Q R K S M W E M W E R C A H H L T E A I Q Y V V E F A K R L S G F M E L C Q N D Q I I L L K A G A M E V V L V R M C R A Y N A N N H T V F F E G K Y G C V E L F R A L G C S E L I S S I F D F S H F  
L S A L C F S E D E I A L Y T A L V L I N A N R P G L Q E K R R V E H L Q Y N L E L A F H H L C K T H R Q G L L A K L P P K G K L R S L C S Q H V E K L Q I F Q H L H P I V V Q A A F P P L Y K E L F S T D V E S P E G L S K

**[ IDENTIFICATION ]****[ IMPORTANT NOTE ]**

The kit is designed for research use only, we will not be responsible for any issue if the kit was used in clinical diagnostic or any other procedures.