

**RPE293Hu01 50µg**

**Recombinant Rac-GTPase Activating Protein 1 (RACGAP1)**

**Organism Species: *Homo sapiens (Human)***

***Instruction manual***

FOR RESEARCH USE ONLY

NOT FOR USE IN CLINICAL DIAGNOSTIC PROCEDURES

---

13th Edition (Revised in Aug, 2023)

**[ PROPERTIES ]**

**Source:** Prokaryotic expression

**Host:** *E.coli*

**Residues:** Met106~Trp539

**Tags:** N-terminal His and GST Tag

**Subcellular Location:** Nucleus, Cytoplasm

**Purity:** > 80%

**Traits:** Freeze-dried powder

**Buffer formulation:** PBS, pH7.4, containing 0.01% SKL, 5% Trehalose .

**Original Concentration:** 50µg/mL

**Applications:** Positive Control; Immunogen; SDS-PAGE; WB.

(May be suitable for use in other assays to be determined by the end user.)

**Predicted isoelectric point:** 8.9

**Predicted Molecular Mass:** 78.1kDa

**Accurate Molecular Mass:** 78kDa as determined by SDS-PAGE reducing conditions.

**[ USAGE ]**

Reconstitute in ddH<sub>2</sub>O to a concentration less than or equal to 0.1mg/mL. Do not vortex.

**[ STORAGE AND STABILITY ]**

**Storage:** Avoid repeated freeze/thaw cycles.

Store at 2-8°C for one month.

Aliquot and store at -80°C for 12 months.

**Stability Test:** The thermal stability is described by the loss rate. The loss rate was determined by accelerated thermal degradation test, that is, incubate the protein at 37°C for 48h, and no obvious degradation and precipitation were observed. The loss rate is less than 5% within the expiration date under appropriate storage condition.

**[ SEQUENCE ]**

MLMCD TSGSIQLSEE QKSALAF LNR GQPSSSNAGN KRLSTIDESG  
 SILSDISFDK TDES LDW DSS LVKTFK LK KR EKRRSTSRQF VDGPPGPVKK  
 TRSIGSAVDQ GNESIVAKTT VTVPNDGGPI EAVSTIETVP YWTRSRRKTG  
 TLQPWNSDST LNSRQLEPRT ETDSVGT PQS NGGMRLHDFV SKTVIKPESC  
 VPCGKRIKFG KLSLKRDCR VVSHPECRDR CPLPCIPTLI GTPVKIGEGM  
 LADFVSQTSP MIPSIVVHCV NEIEQRGLTE TGLYRISGCD RTVKELKEKF  
 LRVKTVPLLS KVDDIHAICS LLKDFLRNLK EPLLTFRNLN AFMEAAEITD  
 EDNSIAAMYQ AVGELPQANR DTLAFLMIHL QRVAQSPHTK MDVANLAKVF  
 GPTIVAHAVP NPDPVTMLQD IKRQPKVVER LLSLPLEYW

[ IDENTIFICATION ]

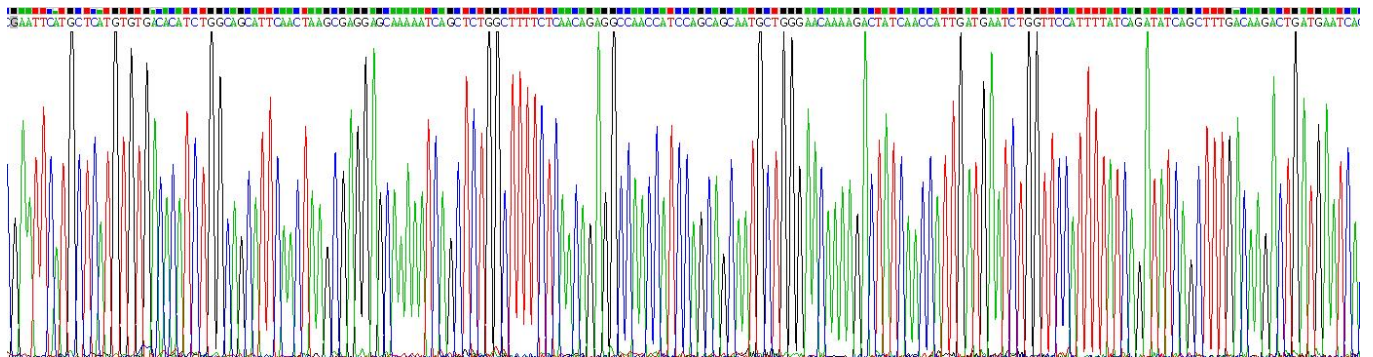


Figure . Gene Sequencing (extract)

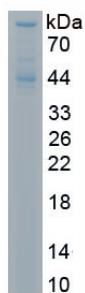


Figure. SDS-PAGE

[ IMPORTANT NOTE ]

The kit is designed for research use only, we will not be responsible for any issue if the kit was used in clinical diagnostic or any other procedures.