

RPC775Hu05 100µg

Recombinant Reelin (RELN)

Organism Species: *Homo sapiens (Human)*

Instruction manual

FOR RESEARCH USE ONLY

NOT FOR USE IN CLINICAL DIAGNOSTIC PROCEDURES

13th Edition (Revised in Aug, 2023)

[PROPERTIES]

Source: Prokaryotic expression

Host: *E.coli*

Residues: Asp2978~Val3373

Tags: N-terminal His Tag

Subcellular Location: Secreted

Purity: > 90%

Traits: Freeze-dried powder

Buffer formulation: PBS, pH7.4, containing 0.01% SKL, 5% Trehalose.

Original Concentration: 200µg/mL

Applications: Positive Control; Immunogen; SDS-PAGE; WB.

(May be suitable for use in other assays to be determined by the end user.)

Predicted isoelectric point: 5.1

Predicted Molecular Mass: 47.8kDa

Accurate Molecular Mass: 46kDa as determined by SDS-PAGE reducing conditions.

[USAGE]

Reconstitute in 10mM PBS (pH7.4) to a concentration of 0.1-1.0 mg/mL. Do not vortex.

[STORAGE AND STABILITY]

Storage: Avoid repeated freeze/thaw cycles.

Store at 2-8°C for one month.

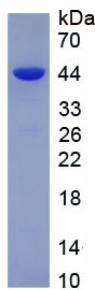
Aliquot and store at -80°C for 12 months.

Stability Test: The thermal stability is described by the loss rate. The loss rate was determined by accelerated thermal degradation test, that is, incubate the protein at 37°C for 48h, and no obvious degradation and precipitation were observed. The loss rate is less than 5% within the expiration date under appropriate storage condition.

[SEQUENCE]

DYS TDGGITWLL HEMDYQKYIS VRHDYILLPE DALNTTTRLR WWQPFVISNG
IVVSGVERAQ WALDNILIGG AEINPSQLVD TFDDEGTSHE ENWSFYRNAV
RTAGFCGNPS FHLYWPNKKK DKTHNALSSR ELIQPGYMM QFKIVVGCEA
TSCGDLHSVM LEYTKDARSD SWQLVQTQCL PSSSNSIGCS PFQFHEATY
NSVNSSSWKR ITIQLPDHVS SSATQFRWIQ KGEETEKQSW AIDHVIYGEA
CPKLCSGHGY CTTGAICICD ESFQGDDCSV FSHDLPSYIK DNFESARVTE
ANWETIQGGV IGSQCGQLAP YAHGDSLYFN GCQIRQAATK PLDLTRASKI
MFVLQIGSMS QTDCNSDLS GPHAVDKAVL LQYSVNNGIT WHV

[IDENTIFICATION]



[IMPORTANT NOTE]

The kit is designed for research use only, we will not be responsible for any issue if the kit was used in clinical diagnostic or any other procedures.