

RPC768Mu01 100µg

Recombinant Retinal Pigment Epithelium Specific Protein 65kDa (RPE65)

Organism Species: *Mus musculus* (Mouse)

Instruction manual

FOR RESEARCH USE ONLY

NOT FOR USE IN CLINICAL DIAGNOSTIC PROCEDURES

13th Edition (Revised in Aug, 2023)

[PROPERTIES]

Source: Prokaryotic expression

Host: *E.coli*

Residues: Ser2~Ser533

Tags: N-terminal His Tag

Subcellular Location: Membrane, Cytoplasm

Purity: > 90%

Traits: Freeze-dried powder

Buffer formulation: PBS, pH7.4, containing 0.01% SKL, 5% Trehalose.

Original Concentration: 200µg/mL

Applications: Positive Control; Immunogen; SDS-PAGE; WB.

(May be suitable for use in other assays to be determined by the end user.)

Predicted isoelectric point: 6.1

Predicted Molecular Mass: 64.7kDa

Accurate Molecular Mass: 65kDa as determined by SDS-PAGE reducing conditions.

[USAGE]

Reconstitute in 10mM PBS (pH7.4) to a concentration of 0.1-1.0 mg/mL. Do not vortex.

[STORAGE AND STABILITY]

Storage: Avoid repeated freeze/thaw cycles.

Store at 2-8°C for one month.

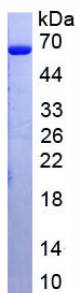
Aliquot and store at -80°C for 12 months.

Stability Test: The thermal stability is described by the loss rate. The loss rate was determined by accelerated thermal degradation test, that is, incubate the protein at 37°C for 48h, and no obvious degradation and precipitation were observed. The loss rate is less than 5% within the expiration date under appropriate storage condition.

[SEQUENCE]

SIQIEHPAG GYKCLFETVE ELSSPLTAHV TGRIPLWLTG SLLRCGPGLF
EVGSEPFYHL FDGQALLHKF DFKEGHVTYH RRFIRTDAYV RAMTEKRIVI
TEFGTCAFPD PCKNIFSRFF SYFKGVEVTD NALVNIYPVG EDYYACTETN
FITKINPETL ETIKQVDLCN YISVNGATAH PHIESDGTVY NIGNCFGKNF
TVAYNIIKIP PLKADKEDPI NKSEVVVQFP CSDRFKPSYV HSFGLTPNYI
VAVETPVKIN LFKFLSSWSL WGANYMDCFE SNESMGVWLH VADKKRRKYF
NNKYRTSPFN LFHHINTYED NGFLIVDLCC WKGFEFVYNY LYLANLRENW
EEVKRNAMKA PQPEVRRYVL PLTIDKVDTG RNLVTLPHTT ATATLRSDET
IWLEPEVLFS GPRQAFEFPPQ INYQKFGGKP YTYAYGLGLN HFVDPKLCKM
NVKTKEIWMW QEPDSSPSEP IFVSQPDAL EDDGVVLSV VSPGAGQKPA
YLLVLNAKDL SEIARAÆVET NIPVTFHGLF KRS

[IDENTIFICATION]



[IMPORTANT NOTE]

The kit is designed for research use only, we will not be responsible for any issue if the kit was used in clinical diagnostic or any other procedures.