

RPB444Hu02 1

Recombinant Ribonuclease Inhibitor (RI)

Organism Species: *Homo sapiens (Human)*

Instruction manual

FOR RESEARCH USE ONLY

NOT FOR USE IN CLINICAL DIAGNOSTIC PROCEDURES

12th Edition (Revised in Aug, 2016)

[PROPERTIES]

Source: Prokaryotic expression

Host: *E.coli*

Residues: Ser2~Ser461

Tags: N-terminal His and GST Tag

Subcellular Location: Cytoplasm

Purity: > 80%

Traits: Freeze-dried powder

Buffer formulation: 20mM Tris, 150mM NaCl, pH8.0, containing 1mM EDTA, 1mM DTT, 0.01% SKL, 5% Trehalose and Proclin300.

Original Concentration: 200µg/mL

Applications: Positive Control; Immunogen; SDS-PAGE; WB.

(May be suitable for use in other assays to be determined by the end user.)

Predicted isoelectric point: 4.4

Predicted Molecular Mass: 79.8kDa

Accurate Molecular Mass: 80kDa as determined by SDS-PAGE reducing conditions.

[USAGE]

Reconstitute in 20mM Tris, 150mM NaCl (pH8.0) to a concentration of 0.1-1.0 mg/mL. Do not vortex.

[STORAGE AND STABILITY]

Storage: Avoid repeated freeze/thaw cycles.

Store at 2-8°C for one month.

Aliquot and store at -80°C for 12 months.

Stability Test: The thermal stability is described by the loss rate. The loss rate was determined by accelerated thermal degradation test, that is, incubate the protein at 37°C for 48h, and no obvious degradation and precipitation were observed. The loss rate is less than 5% within the expiration date under appropriate storage condition.

[SEQUENCE]

SLDIQSLDI QCEELSDARW AELLPLLQQC QVRLDDCGL TEARCKDISS
ALRVNPALAE LNLRSNELGD VGVHCVLQGL QTPSCKIQKL SLQNCCLTGA
GCGVLSSTLR TLPTLQELHL SDNLLGDAGL QLLCEGLLDP QCRLEKLQLE
YCSLSAASCE PLASVLRAPK DFKELTVSNN DINEAGVRVL CQGLKDSPCQ
LEALKLESCG VTSDNCRDLC GIVASKASLR ELALGSNKLK DVGMAELCPG
LLHPSSRLRT LWIWECCGITA KGCGLDCRVL RAKESLKELS LAGNELGDEG
ARLLCETLLE PGCQLESLWV KSCSFTAACC SHFSSVLAQN RFLLELQISN
NRLEDAGVRE LCQGLGQPGS VLRVLWLADC DVSDSSCSSL AATLLANHSL
RELDLSNNCL GDAGILQLVE SVRQPGCLLE QLVLYDIYWS EEMEDRLQAL
EKDKPSLRVI S

[IDENTIFICATION]

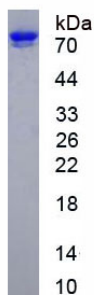


Figure. SDS-PAGE

[IMPORTANT NOTE]

The kit is designed for research use only, we will not be responsible for any issue if the kit was used in clinical diagnostic or any other procedures.