

RPA113Mu01 50µg
Recombinant Ribonuclease T2 (RNASET2)
Organism Species: *Mus musculus* (Mouse)
Instruction manual

FOR RESEARCH USE ONLY
NOT FOR USE IN CLINICAL DIAGNOSTIC PROCEDURES

12th Edition (Revised in Aug, 2016)

[PROPERTIES]

Source: Prokaryotic expression

Host: *E.coli*

Residues: Leu32~His259

Tags: N-terminal His Tag

Subcellular Location: Secreted, Mitochondrion, Lysosome

Purity: > 95%

Traits: Freeze-dried powder

Buffer formulation: 100mMNaHCO₃, 500mMNaCl, pH8.3, containing 0.01% SKL, 5% Trehalose.

Original Concentration: 600µg/mL

Applications: Positive Control; Immunogen; SDS-PAGE; WB.

(May be suitable for use in other assays to be determined by the end user.)

Predicted isoelectric point: 6.3

Predicted Molecular Mass: 30.2kDa

Accurate Molecular Mass: 30kDa as determined by SDS-PAGE reducing conditions.

[USAGE]

Reconstitute in ddH₂O to a concentration of 0.1-1.0 mg/mL. Do not vortex.

[STORAGE AND STABILITY]

Storage: Avoid repeated freeze/thaw cycles.

Store at 2-8°C for one month.

Aliquot and store at -80°C for 12 months.

Stability Test: The thermal stability is described by the loss rate. The loss rate was determined by accelerated thermal degradation test, that is, incubate the protein at 37°C for 48h, and no obvious degradation and precipitation were observed. The loss rate is less than 5% within the expiration date under appropriate storage condition.

[SEQUENCE]

LWSGSHEWK KLILTQHWPP
 TVCKEVNSCQ DSLDYWTIHG LWPDRAEDCN QSWHFNLDEI KDLLRDMKIY
 WPDVIHRSSN RSQFWKHEWV KHGTCAAQVD ALNSEKKYFG KSLDLYKQID
 LNSVLQKFGI KPSINYQLA DFKDALTRIV GVPKIQCLM PEQGESVQTV
 GQIELCFTKE DLHLRNCTEP GEQLSSRQEA WLAMEASTHG MMVCEGPIF
 YPPPTKTQH

[IDENTIFICATION]

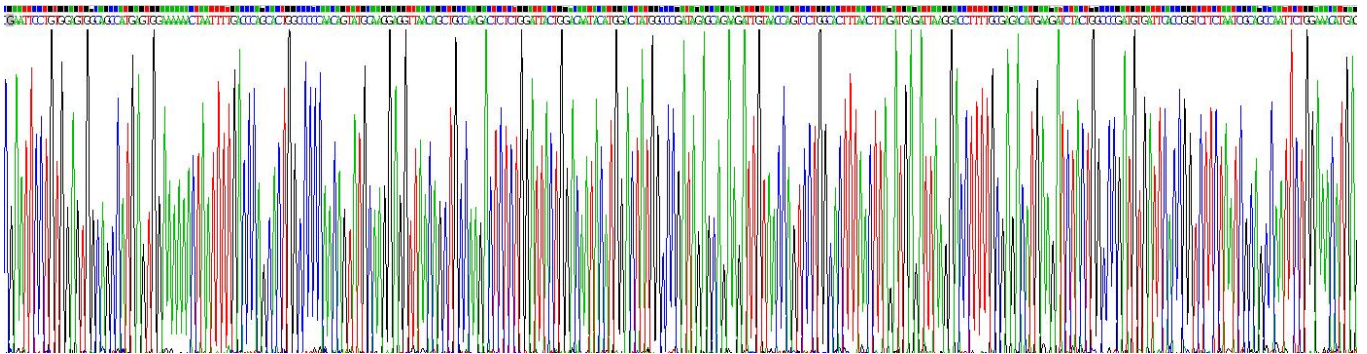


Figure . Gene Sequencing (extract)

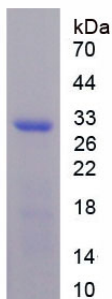


Figure. SDS-PAGE

[IMPORTANT NOTE]

The kit is designed for research use only, we will not be responsible for any issue if the kit was used in clinical diagnostic or any other procedures.