

RPE969Hu01 100ug

Recombinant Ring Finger Protein 1 (RNF1)

Organism Species: *Homo sapiens (Human)*

Instruction manual

FOR RESEARCH USE ONLY

NOT FOR USE IN CLINICAL DIAGNOSTIC PROCEDURES

13th Edition (Revised in Aug, 2023)

[PROPERTIES]

Source: Prokaryotic expression

Host: *E.coli*

Residues: Met1~Lys406

Tags: N-terminal His Tag

Subcellular Location: Nucleus

Purity: > 90%

Traits: Freeze-dried powder

Buffer formulation: pH7.4, containing 0.01% SKL, 5% Trehalose

Original Concentration: 200µg/mL

Applications: Positive Control; Immunogen; SDS-PAGE; WB.

(May be suitable for use in other assays to be determined by the end user.)

Predicted isoelectric point: 5.4

Predicted Molecular Mass: 46.1kDa

Accurate Molecular Mass: 43kDa as determined by SDS-PAGE reducing conditions.

[USAGE]

Reconstitute in 10mM PBS (pH7.4) to a concentration of 0.1-1.0 mg/mL. Do not vortex

[STORAGE AND STABILITY]

Storage: Avoid repeated freeze/thaw cycles.

Store at 2-8°C for one month.

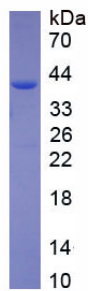
Aliquot and store at -80°C for 12 months.

Stability Test: The thermal stability is described by the loss rate. The loss rate was determined by accelerated thermal degradation test, that is, incubate the protein at 37°C for 48h, and no obvious degradation and precipitation were observed. The loss rate is less than 5% within the expiration date under appropriate storage condition.

[SEQUENCE]

MTTPANAQNA SKTWELSLYE LHRTPEAIM DGTEIAVSPR SLHSELMCPI
CLDMLKNTM TTKECLHRFC SDCIVTALRS GNKECPTCRK KLVSKRSLRP D
PNFDALIS KIYPSREEYE AHQDRVLIRL SRLHNQQALS SSIEEGLRMQ AM
HRAQRVR RPIPGSDQTT TMSGGEGEPG EGEDGEDVS SDSAPDSAPG PAP
KRPRGG GAGGSSVGTG GGGTGGVGGG AGSEDSGDRG GTLGGGTLGP PSPP
GAPSP PEPGGEIELV FRPHLLVEK GEYCQTRYVK TTGNATVDHL SKYLA
LRIA LERRQQQEAG EPGGPGGGAS DTGGPDGCGG EGGGAGGGDG PEEPAL
PSL EGVSEKQYTI YIAPGGGAFT TLNGSLTLEL VNEKFWKVS R PLELCYA
PT KDPK

[IDENTIFICATION]



[IMPORTANT NOTE]

The kit is designed for research use only, we will not be responsible for any issue if the kit was used in clinical diagnostic or any other procedures.