

RPH180Hu01 50µg
Recombinant SET Binding Protein 1 (SETBP1)
Organism Species: *Homo sapiens (Human)*
Instruction manual

FOR RESEARCH USE ONLY
NOT FOR USE IN CLINICAL DIAGNOSTIC PROCEDURES

12th Edition (Revised in Aug, 2016)

[PROPERTIES]

Source: Prokaryotic expression

Host: *E.coli*

Residues: Gly1297~Pro1596

Tags: N-terminal His and GST Tag

Subcellular Location: Nucleus

Purity: > 95%

Traits: Freeze-dried powder

Buffer formulation: 20mM Tris, 150mM NaCl, pH8.0, containing 0.01% SKL, 5% Trehalose.

Original Concentration: 20µg/mL

Applications: Positive Control; Immunogen; SDS-PAGE; WB.

(May be suitable for use in other assays to be determined by the end user.)

Predicted isoelectric point: 11.0

Predicted Molecular Mass: 63.3kDa

Accurate Molecular Mass: 55kDa as determined by SDS-PAGE reducing conditions.

Phenomenon explanation:

The possible reasons that the actual band size differs from the predicted are as follows:

1. Splice variants: Alternative splicing may create different sized proteins from the same gene.
2. Relative charge: The composition of amino acids may affect the charge of the protein.
3. Post-translational modification: Phosphorylation, glycosylation, methylation etc.
4. Post-translation cleavage: Many proteins are synthesized as pro-proteins, and then cleaved to give the active form.
5. Polymerization of the target protein: Dimerization, multimerization etc.

[USAGE]

Reconstitute in 20mM Tris, 150mM NaCl (pH8.0) to a concentration of 0.1-1.0 mg/mL. Do not vortex.

[STORAGE AND STABILITY]

Storage: Avoid repeated freeze/thaw cycles.

Store at 2-8°C for one month.

Aliquot and store at -80°C for 12 months.

Stability Test: The thermal stability is described by the loss rate. The loss rate was determined by accelerated thermal degradation test, that is, incubate the protein at 37°C for 48h, and no obvious degradation and precipitation were observed. The loss rate is less than 5% within the expiration date under appropriate storage condition.

[SEQUENCE]

				GSKR
RSYEGFGTYR	EKDIQAFKMN	RKERSSYDSS	MSPGMPSPHL	KVDQTAVHSK
NEGSVPTMMT	RKKPAAVDSV	TIPPAPVLSL	LAASAATSDA	VGSSLKCRFK
RREIEAIQCE	VRKMCNYTKI	LSTKKNLDHV	NKILKAKRLQ	RQSKTGNNFV
KKRRGRPRKQ	PTQFDEDSRD	QMPVLEKCID	LPSKRGQKPS	LSPLVLEPAA
SQDTIMATIE	AVIHMAREAP	PLPPPPPPPL	PPPPPPPLPP	PPPLPKTPRG
GKRKHKPQAP	AQPPQSQSPQ	QLPQEEEVK	AKRQRKSRGS	ESEVLP

[IDENTIFICATION]

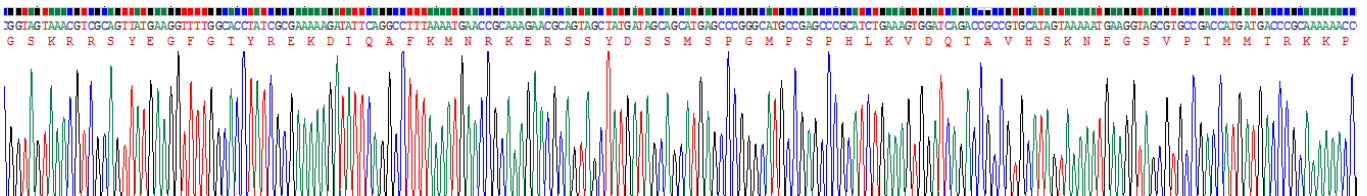


Figure. Gene Sequencing (Extract)

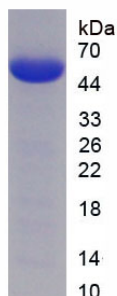


Figure. SDS-PAGE

[IMPORTANT NOTE]

The kit is designed for research use only, we will not be responsible for any issue if the kit was used in clinical diagnostic or any other procedures.