

**RPB448Hu01 1**

**Recombinant Semaphorin 7A (SEMA7A)**

**Organism Species: *Homo sapiens (Human)***

***Instruction manual***

FOR RESEARCH USE ONLY

NOT FOR USE IN CLINICAL DIAGNOSTIC PROCEDURES

---

12th Edition (Revised in Aug, 2016)

**[ PROPERTIES ]**

**Source:** Prokaryotic expression

**Host:** *E.coli*

**Residues:** Tyr242~Arg507

**Tags:** N-terminal His Tag

**Subcellular Location:** Membrane, Chromosome

**Purity:** > 90%

**Traits:** Freeze-dried powder

**Buffer formulation:** 20mM Tris, 150mM NaCl, pH8.0, containing 1mM EDTA, 1mM DTT, 0.01% SKL, 5% Trehalose and Proclin300.

**Original Concentration:** 200µg/mL

**Applications:** Positive Control; Immunogen; SDS-PAGE; WB.

(May be suitable for use in other assays to be determined by the end user.)

**Predicted isoelectric point:** 8.2

**Predicted Molecular Mass:** 34.0kDa

**Accurate Molecular Mass:** 34kDa as determined by SDS-PAGE reducing conditions.

**[ USAGE ]**

Reconstitute in 20mM Tris, 150mM NaCl (pH8.0) to a concentration of 0.1-1.0 mg/mL. Do not vortex.

**[ STORAGE AND STABILITY ]**

**Storage:** Avoid repeated freeze/thaw cycles.

Store at 2-8°C for one month.

Aliquot and store at -80°C for 12 months.

**Stability Test:** The thermal stability is described by the loss rate. The loss rate was determined by accelerated thermal degradation test, that is, incubate the protein at 37°C for 48h, and no obvious degradation and precipitation were observed. The loss rate is less than 5% within the expiration date under appropriate storage condition.

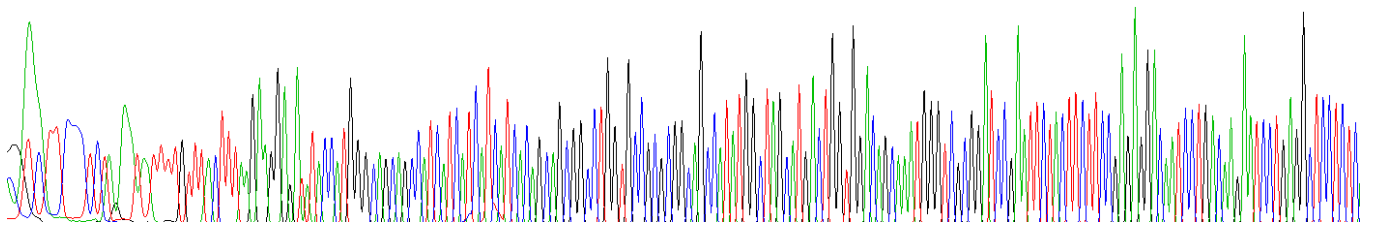
**[ SEQUENCE ]**

```

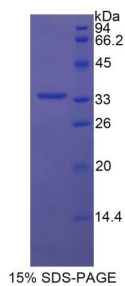
                                                    YFFREDNPD
KNPEAPLNVS RVAQLCRGDQ GGESSLSVSK WNTFLKAMLV CSDAATNKNF
NRLQDVFLLP DPSGQWRDTR VYGVFSNPWN YSAVCVYSLG DIDKVVRTSS
LKG YHSSLPN PRPGKCLPDQ QPIPTETFQV ADRHPEVAQR VEPMGPLKTP
LFH SKYHYQK VAVHRMQASH GETFHVLYLT TDRGTIHKVV EPGEQEHSFA
FNIMEIQPFR RAAAIQTMSL DAERRKLYVS SQWEVSQVPL DLCEVYGGGC
HGCLMSR
    
```

**[ IDENTIFICATION ]**

ATGAGCTTCCCTCTGAGTAAATTTTGTTTTCCTTAAAGGAGATATACCATGGGCGGAGCATGATCATCATCATCAGCGCGGGGCTGGTGGCGGCGGCAGCCATATGGCTTAGCATGACTGGTGGACGCAAAATGGGTGGGATTCGGAAATCTACTCTTCTTCCGGAGGGACATCTCTGCAAGATCTCTGAGGCTCTCTG



**Figure . Gene Sequencing (extract)**



**[ IMPORTANT NOTE ]**

The kit is designed for research use only, we will not be responsible for any issue if the kit was used in clinical diagnostic or any other procedures.