

**RPH136Mu01 50µg**

**Recombinant Serine Palmitoyltransferase, Long Chain Base Subunit 3 (SPTLC3)**

**Organism Species: *Mus musculus* (Mouse)**

***Instruction manual***

FOR RESEARCH USE ONLY

NOT FOR USE IN CLINICAL DIAGNOSTIC PROCEDURES

---

12th Edition (Revised in Aug, 2016)

**[ PROPERTIES ]**

**Source:** Prokaryotic expression

**Host:** *E.coli*

**Residues:** Arg80~Ala563

**Tags:** N-terminal His Tag

**Subcellular Location:** Secreted

**Purity:** > 90%

**Traits:** Freeze-dried powder

**Buffer formulation:** 100mMNaHCO<sub>3</sub>, 500mMNaCl, pH8.3, containing 0.01% SKL, 5% Trehalose.

**Original Concentration:** 80µg/mL

**Applications:** Positive Control; Immunogen; SDS-PAGE; WB.

(May be suitable for use in other assays to be determined by the end user.)

**Predicted isoelectric point:** 7.3

**Predicted Molecular Mass:** 58.4kDa

**Accurate Molecular Mass:** 58kDa as determined by SDS-PAGE reducing conditions.

**[ USAGE ]**

Reconstitute in ddH<sub>2</sub>O to a concentration of 0-0.5 mg/mL. Do not vortex.

**[ STORAGE AND STABILITY ]**

**Storage:** Avoid repeated freeze/thaw cycles.

Store at 2-8°C for one month.

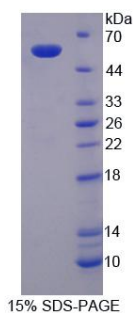
Aliquot and store at -80°C for 12 months.

**Stability Test:** The thermal stability is described by the loss rate. The loss rate was determined by accelerated thermal degradation test, that is, incubate the protein at 37°C for 48h, and no obvious degradation and precipitation were observed. The loss rate is less than 5% within the expiration date under appropriate storage condition.

**[ SEQUENCE ]**

R DFMRNWGIEK CNAVEREEQ  
 KDFVPLYQDF ENFYKRNLVM RIRDSWSHTV CSAPEPYMNV MEKVTDDYNW  
 TFRHTGKVIE NIINMASYNV LGLAGKYDDS MVRVKDTLEK YGVGVASTRN  
 EMGTLDIHKE LEDLMAEFLN VEAVMSFGMG FATNAMNIPV FVGKGCLILS  
 DEFNHTSVIL GSRLSGAVIR PFKHNNAENL EKLLREAIIR GQPGTGRAWK  
 KILIVVEGVY SMEGSIVNLA QIVALKKKYK AYLIDEAHS IGCTGPTGRG  
 VRELFGLDPE DIDVYMGFTT KSFSGSGGYI GGKKEIVDYL RMQSHSTTYA  
 TSMSPVVAQ LIRSLKITMG YEGNIGGMER IQQLKENIKY FRRRLKEMGF  
 IIYGNDFSPV IPVLLYMPAK VSAFSRFLK KKISVVVVG F PATSLPEGRA  
 RFSMSSAHR EMLDTVLEVV DELGDLLNVK YFPLKKSRA ILYNKEGFDN  
 EASFEEMHSE PEA

**[ IDENTIFICATION ]**



**[ IMPORTANT NOTE ]**

The kit is designed for research use only, we will not be responsible for any issue if the kit was used in clinical diagnostic or any other procedures.