

**RPH136Mu02 100µg**

**Recombinant Serine Palmitoyltransferase, Long Chain Base Subunit 3 (SPTLC3)**

**Organism Species: *Mus musculus* (Mouse)**

***Instruction manual***

FOR RESEARCH USE ONLY

NOT FOR USE IN CLINICAL DIAGNOSTIC PROCEDURES

---

13th Edition (Revised in Aug, 2023)

**[ PROPERTIES ]**

**Source:** Prokaryotic expression

**Host:** *E.coli*

**Residues:** Arg80~Ala563

**Tags:** Two N-terminal Tags, His-tag and SUMO-tag

**Subcellular Location:** Membrane

**Purity:** > 90%

**Traits:** Freeze-dried powder

**Buffer formulation:** PBS, pH7.4, containing 0.01% SKL, 5% Trehalose .

**Original Concentration:** 200µg/mL

**Applications:** Positive Control; Immunogen; SDS-PAGE; WB.

(May be suitable for use in other assays to be determined by the end user.)

**Predicted isoelectric point:** 7.3

**Predicted Molecular Mass:** 68.4kDa

**Accurate Molecular Mass:** 68kDa as determined by SDS-PAGE reducing conditions.

**[ USAGE ]**

Reconstitute in 10mM PBS (pH7.4) to a concentration of 0.1-1.0 mg/mL. Do not vortex.

**[ STORAGE AND STABILITY ]**

**Storage:** Avoid repeated freeze/thaw cycles.

Store at 2-8°C for one month.

Aliquot and store at -80°C for 12 months.

**Stability Test:** The thermal stability is described by the loss rate. The loss rate was determined by accelerated thermal degradation test, that is, incubate the protein at 37°C for 48h, and no obvious degradation and precipitation were observed. The loss rate is less than 5% within the expiration date under appropriate storage condition.

**[ SEQUENCE ]**

R DFMRNWGIEK CNAEVEREEQ KDFVPLYQDF ENFYKRNL YM RIRDSWSHTV CSAPEPYMNV  
 MEKVTD DYNW TFRHTGKVIE NIINMASYN Y LGLAGKYDDS MVRVKDTLEK YGVGVASTRN EMGTLDIHKE  
 LEDLMAEFLN VEAVMSFGMG FATNAMNIPV FVGKGCLILS DEFNHTSVIL GSRLSGAVIR PFKHNNAENL  
 EKLLREAIIR GQPGTGRAWK KILIVVEGVY SMEGSIVNLA QIVALKKKYK AYLYIDEAHS IGCTGPTGRG  
 VRELFGLDPE DIDVYMGFTFT KSFSGSGGYI GKKKEIVDYL RMQSHSTTYA TSMSPVVAQ LIRSLKITMG  
 YEGNIGGMER IQQLKENIKY FRRRLKEMGF IYGNDFSPV IPVLLYMPAK VSAFSRFLK KKISVVVVG  
 PATSLPEGRA RFSMSSAHR EMLDTVLEV V DELGDLLNVK YFPLKKS GRA ILYNKEGFDN EASF EEMHSE  
 PEA

**[ IDENTIFICATION ]**

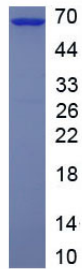


Figure. SDS-PAGE

**[ IMPORTANT NOTE ]**

The kit is designed for research use only, we will not be responsible for any issue if the kit was used in clinical diagnostic or any other procedures.