

**RPA885Hu01 10µg**

**Recombinant Serum Amyloid A (SAA)**

**Organism Species: *Homo sapiens* (Human)**

***Instruction manual***

FOR RESEARCH USE ONLY

NOT FOR USE IN CLINICAL DIAGNOSTIC PROCEDURES

---

13th Edition (Revised in Aug, 2023)

## [ **PROPERTIES** ]

**Source:** Prokaryotic expression

**Host:** *E.coli*

**Residues:** Arg19~Tyr122

**Tags:** N-terminal His Tag

**Subcellular Location:** Secreted

**Purity:** > 95%

**Traits:** Freeze-dried powder

**Buffer formulation:** 20mM Tris, 150mM NaCl, pH8.0, containing 0.01% skl, 5%Trehalose.

**Original Concentration:** 200µg/mL

**Applications:** Positive Control; Immunogen; SDS-PAGE; WB.

(May be suitable for use in other assays to be determined by the end user.)

**Predicted isoelectric point:** 6.3

**Predicted Molecular Mass:** 12.9kDa

**Accurate Molecular Mass:** 14kDa as determined by SDS-PAGE reducing conditions.

## [ **USAGE** ]

Reconstitute in 20mM Tris, 150mM NaCl (pH8.0) to a concentration of 0.1-1.0 mg/mL. Do not vortex.

## [ **STORAGE AND STABILITY** ]

**Storage:** Avoid repeated freeze/thaw cycles.

Store at 2-8°C for one month.

Aliquot and store at -80°C for 12 months.

**Stability Test:** The thermal stability is described by the loss rate. The loss rate was determined by accelerated thermal degradation test, that is, incubate the protein at 37°C for 48h, and no obvious degradation and precipitation were observed. The loss rate is less than 5% within the expiration date under appropriate storage condition.

## [ **SEQUENCE** ]

```
RS FFSFLGEAFD GARDMWRAYS DMREANYIGS  
DKYFHARGNY DAAKRGPGV WAAEAISDAR ENIQRFHG AEDSLADQAA  
NEWGRSGKDP NHFRPAGLPE KY
```

### [ IDENTIFICATION ]

```
TGGAGCTTCCTTTGGTCTTTGGGGCTTGGATGGGCTGGGGCTATGGGAGGACTCCTGACATGAGAGAGGCATTTACATGGCTCAGACAAATCCTTCCATGCTGGGGAGCCTATGATCCTGCTGCAAAAGGGGACTGGGGTCTGGGTCCAGAGGTGATCACGGATCCAGAGGATATCCAGAGATTCTTT  
R S F F S F L G E A F D G A R D M W R A Y S D M R E A N Y I G S D K Y F H A R G N Y D A A K R G P G G A W A A E V I S D A R E N I Q R F F
```

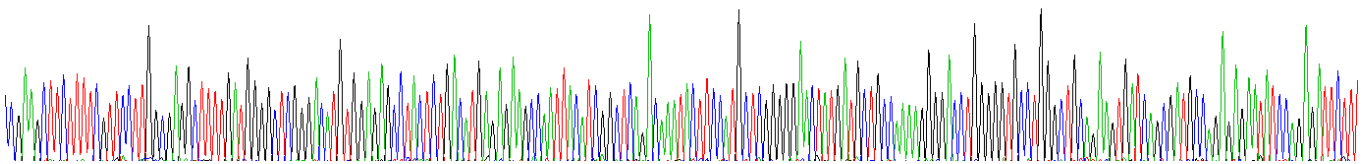
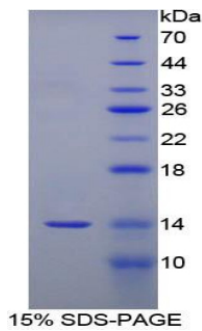


Figure. Gene Sequencing (Extract)



### [ IMPORTANT NOTE ]

The kit is designed for research use only, we will not be responsible for any issue if the kit was used in clinical diagnostic or any other procedures.