

RPB789Hu02 1

Recombinant Sialic Acid Binding Ig Like Lectin 7 (SIGLEC7)

Organism Species: *Homo sapiens (Human)*

Instruction manual

FOR RESEARCH USE ONLY

NOT FOR USE IN CLINICAL DIAGNOSTIC PROCEDURES

12th Edition (Revised in Aug, 2016)

[PROPERTIES]

Source: Prokaryotic expression

Host: *E.coli*

Residues: Glu38~Tyr121

Tags: Two N-terminal Tags, His-tag and SUMO-tag

Subcellular Location: Membrane

Purity: > 95%

Traits: Freeze-dried powder

Buffer formulation: 20mM Tris, 150mM NaCl, pH8.0, containing 1mM EDTA, 1mM DTT, 0.01% SKL, 5% Trehalose and Proclin300.

Original Concentration: 200µg/mL

Applications: Positive Control; Immunogen; SDS-PAGE; WB.

(May be suitable for use in other assays to be determined by the end user.)

Predicted isoelectric point: 5.7

Predicted Molecular Mass: 15.2kDa

Accurate Molecular Mass: 18kDa as determined by SDS-PAGE reducing conditions.

[USAGE]

Reconstitute in 20mM Tris, 150mM NaCl (pH8.0) to a concentration of 0.1-1.0 mg/mL. Do not vortex.

[STORAGE AND STABILITY]

Storage: Avoid repeated freeze/thaw cycles.

Store at 2-8°C for one month.

Aliquot and store at -80°C for 12 months.

Stability Test: The thermal stability is described by the loss rate. The loss rate was determined by accelerated thermal degradation test, that is, incubate the protein at 37°C for 48h, and no obvious degradation and precipitation were observed. The loss rate is less than 5% within the expiration date under appropriate storage condition.

[SEQUENCE]

EGM CVHVRCSFSY
PVDSQTSDP VHGWFVFRAGN DISWKAPVAT NNPAWAVQEE TRDRFHLLGD
PQTKNCTLSI RDARMSDAGR Y

[IDENTIFICATION]

G A A T T G G G G A T G T G T G C A T G T G C T C C A C C C G G A G G C G C T G C T G C C C G T A T G C T G C T C C G C T C C G C C C G G A T G C T A T A G C T G A G C C T C G T G C C C C A A A C C C G C T T G C C C G C G A G G G A A C T C C G C C C A T T C C C T C T T G C G C C C G A G C C A A A T T G C C C T G C C A T C G G A T C C G A T G C G T G G

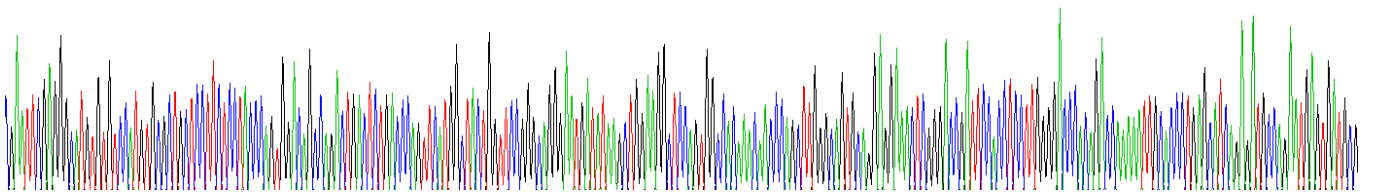


Figure . Gene Sequencing (extract)

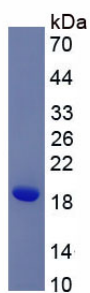


Figure. SDS-PAGE

[IMPORTANT NOTE]

The kit is designed for research use only, we will not be responsible for any issue if the kit was used in clinical diagnostic or any other procedures.