

**RPA966Hu01 10µg**

**Recombinant Sialoadhesin (SN)**

**Organism Species: *Homo sapiens (Human)***

***Instruction manual***

FOR RESEARCH USE ONLY

NOT FOR USE IN CLINICAL DIAGNOSTIC PROCEDURES

---

13th Edition (Revised in Aug, 2023)

**[ PROPERTIES ]**

**Source:** Prokaryotic expression

**Host:** *E.coli*

**Residues:** Gly34~Gly240

**Tags:** N-terminal His Tag

**Subcellular Location:** Membrane, Secreted

**Purity:** > 95%

**Traits:** Freeze-dried powder

**Buffer formulation:** PBS, pH7.4, containing 0.01% SKL, 5% Trehalose .

**Original Concentration:** 500µg/mL

**Applications:** Positive Control; Immunogen; SDS-PAGE; WB.

(May be suitable for use in other assays to be determined by the end user.)

**Predicted isoelectric point:** 5.9

**Predicted Molecular Mass:** 25.0kDa

**Accurate Molecular Mass:** 26kDa as determined by SDS-PAGE reducing conditions.

**[ USAGE ]**

Reconstitute in 10mM PBS (pH7.4) to a concentration of 0.1-1.0 mg/mL. Do not vortex.

**[ STORAGE AND STABILITY ]**

**Storage:** Avoid repeated freeze/thaw cycles.

Store at 2-8°C for one month.

Aliquot and store at -80°C for 12 months.

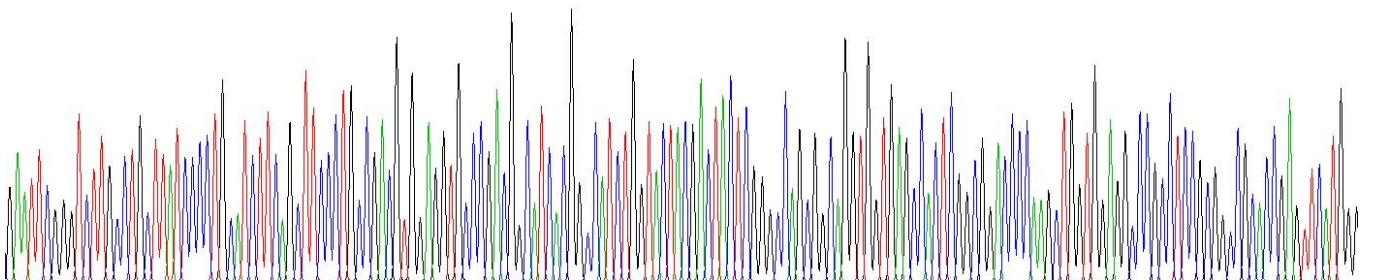
**Stability Test:** The thermal stability is described by the loss rate. The loss rate was determined by accelerated thermal degradation test, that is, incubate the protein at 37°C for 48h, and no obvious degradation and precipitation were observed. The loss rate is less than 5% within the expiration date under appropriate storage condition.

**[ SEQUENCE ]**

GSCLLIP CIFSFPADVE  
 VPDGITAIWY YDYSQRQVV SHSADPKLVE ARFRGRTEFM GNPEHRVCNL  
 LLKDLQPEDS GSYNFRFEIS EVNRWSDVKG TLVTVTEEPR VPTIASPVEL  
 LEGTEVDFNC STPYVCLQE Q VRLQWQGQDP ARSVTFNSQK FEPTGVGHLE  
 TLHMAMSWQD HGRILRCQLS VANHRAQSEI HLQVKYAPKG

**[ IDENTIFICATION ]**

G A A T T C G G G C T T T G C C T G C T T A T C C C C T G C A T C T T T C G C T T C C C T G C C G A C G T G G A G G T G C C C G A G S G C A T C A C G G C C A T C T G G T A C T A C G A C T A C T C G G G C A G G G C G G T G T G A G C C A C T G G G G G A C C C C A A G C T G T G G A G C C C C C C C T C C G C G C C C A C C G A G T T C A T G G C



**Figure . Gene Sequencing (extract)**

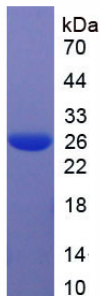


Figure. SDS-PAGE

**[ IMPORTANT NOTE ]**

The kit is designed for research use only, we will not be responsible for any issue if the kit was used in clinical diagnostic or any other procedures.