

**RPE912Mu01 50µg**

**Recombinant Sirtuin 1 (SIRT1)**

**Organism Species: *Mus musculus* (Mouse)**

***Instruction manual***

FOR RESEARCH USE ONLY

NOT FOR USE IN CLINICAL DIAGNOSTIC PROCEDURES

---

12th Edition (Revised in Aug, 2016)

**[ PROPERTIES ]**

**Source:** Prokaryotic expression

**Host:** *E.coli*

**Residues:** Glu236~Ala490

**Tags:** N-terminal His Tag

**Subcellular Location:** Nucleus

**Purity:** > 97%

**Traits:** Freeze-dried powder

**Buffer formulation:** 20mM Tris, 150mM NaCl, pH8.0, containing 1mM EDTA, 1mM DTT, 0.01% SKL, 5% Trehalose and Proclin300.

**Original Concentration:** 200µg/mL

**Applications:** Positive Control; Immunogen; SDS-PAGE; WB.

(May be suitable for use in other assays to be determined by the end user.)

**Predicted isoelectric point:** 5.9

**Predicted Molecular Mass:** 30.0kDa

**Accurate Molecular Mass:** 30kDa as determined by SDS-PAGE reducing conditions.

**[ USAGE ]**

Reconstitute in 20mM Tris, 150mM NaCl (pH8.0) to a concentration of 0.1-1.0 mg/mL. Do not vortex.

**[ STORAGE AND STABILITY ]**

**Storage:** Avoid repeated freeze/thaw cycles.

Store at 2-8°C for one month.

Aliquot and store at -80°C for 12 months.

**Stability Test:** The thermal stability is described by the loss rate. The loss rate was determined by accelerated thermal degradation test, that is, incubate the protein at 37°C for 48h, and no obvious degradation and precipitation were observed. The loss rate is less than 5% within the expiration date under appropriate storage condition.

**[ SEQUENCE ]**

EDAVK LLQECKKIIV  
LTGAGVSVSC GIPDFRSRDG IYARLAVDFP DLPDPQAMFD IEYFRKDPRP  
FFKFAKEIYP QFQPSLCHK FIALSDKEGK LLRNYTQNID TLEQVAGIQR  
ILQCHGSFAT ASCLICKYKV DCEAVRGDIF NQVPRCPRC PADEPLAIMK  
PEIVFFGENL PEQFHRAMKY DKDEVDLLIV IGSSLKVRPV ALIPSSIPHE  
VPQILINREP LPHLHFDVEL LGDCDVIINE LCHRLGGEYA

**[ IDENTIFICATION ]**

ATGAGTCGCTGAGGTTCCTCCGCGGTGAAGAGCTAATAGTTCGACTGGGCTTTCCTGCTCTCTGCGGATCTCTGACTTCGACTCAGGAGAGGCTATCTATCTCCCTTCCGCTTCGCTGGACTTCGCGAGCTCCGAGGCTCCAGGCTGTTCGATATGAGTATTTAGAAAGAGCCAGAGCATTCTTCAGGTTTCC  
E D A V K L L Q E C K K I I V L T G A G V S V S C G I P D F R S R D G I Y A R L A V D F P D L P D P Q A M F D I E Y F R K D P R P F F K E A

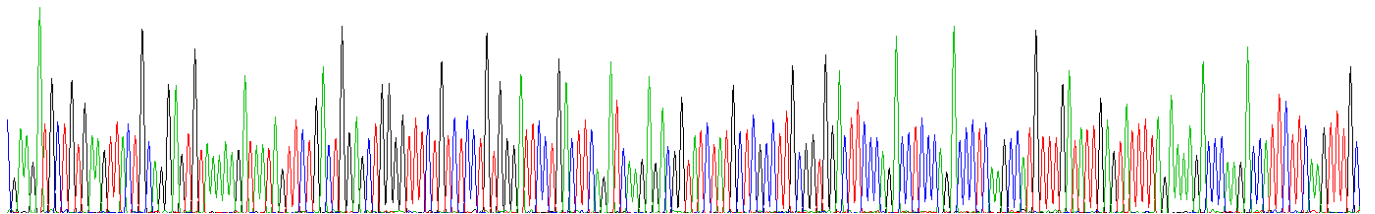


Figure. Gene Sequencing (Extract)

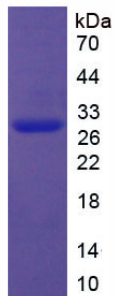


Figure. SDS-PAGE

**[ IMPORTANT NOTE ]**

The kit is designed for research use only, we will not be responsible for any issue if the kit was used in clinical diagnostic or any other procedures.