

RPE886Hu01 10ug

Recombinant Sorting Nexin 1 (SNX1)

Organism Species: *Homo sapiens (Human)*

Instruction manual

FOR RESEARCH USE ONLY

NOT FOR USE IN CLINICAL DIAGNOSTIC PROCEDURES

12th Edition (Revised in Aug, 2016)

[PROPERTIES]

Source: Prokaryotic expression

Host: *E.coli*

Residues: Met1~Ser522

Tags: N-terminal His Tag

Subcellular Location: Membrane, Golgi apparatus

Purity: > 95%

Traits: Freeze-dried powder

Buffer formulation: PBS, pH7.4, containing 0.01% SKL, 5% Trehalose.

Original Concentration: 50µg/mL

Applications: Positive Control; Immunogen; SDS-PAGE; WB.

(May be suitable for use in other assays to be determined by the end user.)

Predicted isoelectric point: 5.1

Predicted Molecular Mass: 62.8kDa

Accurate Molecular Mass: 68kDa as determined by SDS-PAGE reducing conditions.

Phenomenon explanation:

The possible reasons that the actual band size differs from the predicted are as follows:

1. Splice variants: Alternative splicing may create different sized proteins from the same gene.
2. Relative charge: The composition of amino acids may affect the charge of the protein.
3. Post-translational modification: Phosphorylation, glycosylation, methylation etc.
4. Post-translation cleavage: Many proteins are synthesized as pro-proteins, and then cleaved to give the active form.
5. Polymerization of the target protein: Dimerization, multimerization etc.

[USAGE]

Reconstitute in ddH₂O to a concentration of 0.1-0.4 mg/mL. Do not vortex.

[STORAGE AND STABILITY]

Storage: Avoid repeated freeze/thaw cycles.

Store at 2-8°C for one month.

Aliquot and store at -80°C for 12 months.

Stability Test: The thermal stability is described by the loss rate. The loss rate was determined by accelerated thermal degradation test, that is, incubate the protein at 37°C for 48h, and no obvious degradation and precipitation were observed. The loss rate is less than 5% within the expiration date under appropriate storage condition.

[**SEQUENCE**]

```
MASGGGGCSA SERLPPFPFG LEPSEGAAG GSEPEAGDSD TEGEDIFTGA
AVVSKHQSPK ITTSLPINN GSKENGIHEE QDQEPQDLFA DATVELSLDS
TQNNQKKVLA KTLISLPPQE ATNSSKPQPT YEELEEEEQE DQFDLTVGIT
DPEKIGDGMN AYWVAYKVTQ TSLPLFRSQ FAVKRRFSDF LGLYEKLSEK
HSQNGFIVPP PPEKSLIGMT KVKVGKEDSS SAEFLEKRRR ALERYLQRIV
NHPTMLQDPD VREFLEKEEL PRAVGTQTLS GAGLLKMFNK ATDAVSKMTI
KMNESDIWFE EKLQEVECEE QRLRKLHAVV ETLVNRKEL ALNTAQFAKS
LAMLGSSDN TALSRALSQ L AEVEEKIEQL HQEQANNDFF LLAELLSDYI
RLLAIVRAAF DQRMKTWQRW QDAQATLQKK REAEARLLWA NKPKLQQAK
DEILEWESRV TQYERDFERI STVVRKEVIR FEKEKSKDFK NHVIKYLETL
LYSQQLAKY WEAFLPEAKA IS
```

[**IDENTIFICATION**]

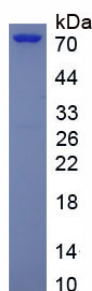


Figure. SDS-PAGE

[**IMPORTANT NOTE**]

The kit is designed for research use only, we will not be responsible for any issue if the kit was

used in clinical diagnostic or any other procedures.