

**RPL016Hu01 100ug**

**Recombinant Sprouty Related, EVH1 Domain Containing Protein 2 (SPRED2)**

**Organism Species: *Homo sapiens (Human)***

***Instruction manual***

FOR RESEARCH USE ONLY

NOT FOR USE IN CLINICAL DIAGNOSTIC PROCEDURES

---

13th Edition (Revised in Aug, 2023)

**[ PROPERTIES ]**

**Source:** Prokaryotic expression

**Host:** *E.coli*

**Residues:** Met1~Ala418

**Tags:** N-terminal His Tag

**Subcellular Location:** Membrane, Cytoplasm

**Purity:** > 97%

**Traits:** Freeze-dried powder

**Buffer formulation:** PBS, pH7.4, containing 0.01% SKL, 5% Trehalose.

**Original Concentration:** 200µg/mL

**Applications:** Positive Control; Immunogen; SDS-PAGE; WB.

(May be suitable for use in other assays to be determined by the end user.)

**Predicted isoelectric point:** 6.3

**Predicted Molecular Mass:** 51.2kDa

**Accurate Molecular Mass:** 51kDa as determined by SDS-PAGE reducing conditions.

**[ USAGE ]**

Reconstitute in ddH<sub>2</sub>O to a concentration less than or equal to 0.1mg/mL. Do not vortex.

**[ STORAGE AND STABILITY ]**

**Storage:** Avoid repeated freeze/thaw cycles.

Store at 2-8°C for one month.

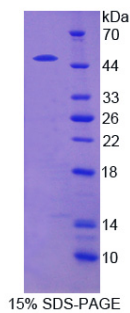
Aliquot and store at -80°C for 12 months.

**Stability Test:** The thermal stability is described by the loss rate. The loss rate was determined by accelerated thermal degradation test, that is, incubate the protein at 37°C for 48h, and no obvious degradation and precipitation were observed. The loss rate is less than 5% within the expiration date under appropriate storage condition.

**[ SEQUENCE ]**

MTEETHPDDD SYIVRVKAVV MTRDDSSGGW FPQEGGGISR VGVCKVMHPE  
GNRSGFLIH GERQKDKLVV LECYVRKDLV YTKANPTFHH WKVDNRKFGL  
TFQSPADARA FDRGVRKAIE DLIEGSTTSS STIHNEAELG DDDVFTTATD  
SSSNSSQKRE QPTRTISSPT SCEHRIYTL GHLHDSYPTD HYHLDQPMR  
PYRQVSFPDD DEEIVRINPR EKIWMGTGYED YRHAPVRGKY PDPSEDADSS  
YVRFKGEVP KHDYNYPYVD SSDFGLGEDP KGRGGSVIKT QPSRGKSRRR  
KEDGERSRCV YCRDMFNHEE NRRGHCQDAP DSVRTCIRRV SCMWCADSML  
YHCMSDPEGD YTDPCSCDTS DEKFCLRWMA LIALSFLAPC MCCYLPLRAC  
YHCGVMCRCC GGKHKAAA

**[ IDENTIFICATION ]**



**[ IMPORTANT NOTE ]**

The kit is designed for research use only, we will not be responsible for any issue if the kit was used in clinical diagnostic or any other procedures.